

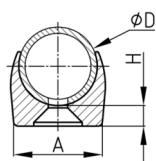
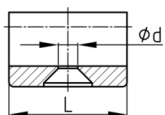


# Walter Bethke GmbH & Co. KG

Technische Kunststoff - und Hybridprodukte

**Produktgruppe** KSGW

Klemmschalengleiter aus LD-PE mit Bohrung

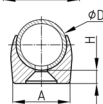
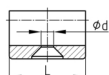


## Standardfarben

- schwarz

## Material

- Grundkörper: LD- Polyethylen (LD-PE)



Bestellnummer	A	D	d	H	L
	mm	mm	mm	mm	mm
KSGW 12	16	12	5,5	6	30