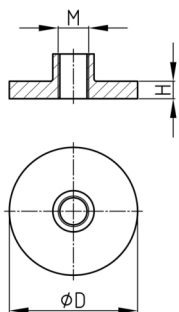


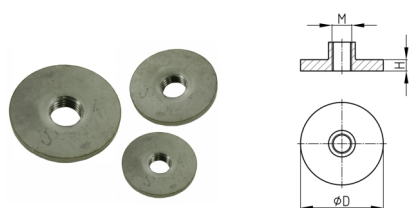
### Produktgruppe SPPR

Schweißplatten aus Edelstahl mit Gewinde, fertig zum Anschweißen an Rundrohre



#### Material

- AISI 304 (A2)



#### Produktinformationen

- Die Schweißplatten stellen sicher, dass das Rohr nach dem Schweißen zu 100 % dicht ist.

| Bestellnummer | D  | H  | M   |
|---------------|----|----|-----|
|               | mm | mm |     |
| SPPR 33 M8    | 33 | 3  | M8  |
| SPPR 38 M8    | 38 | 3  | M8  |
| SPPR 40 M8    | 40 | 3  | M8  |
| SPPR 33 M10   | 33 | 3  | M10 |
| SPPR 38 M10   | 38 | 3  | M10 |
| SPPR 40 M10   | 40 | 3  | M10 |
| SPPR 43 M10   | 43 | 3  | M10 |
| SPPR 50 M10   | 50 | 3  | M10 |
| SPPR 33 M12   | 33 | 3  | M12 |
| SPPR 38 M12   | 38 | 3  | M12 |
| SPPR 40 M12   | 40 | 3  | M12 |
| SPPR 43 M12   | 43 | 3  | M12 |
| SPPR 50 M12   | 50 | 3  | M12 |
| SPPR 38 M16   | 38 | 3  | M16 |
| SPPR 40 M16   | 40 | 3  | M16 |
| SPPR 43 M16   | 43 | 3  | M16 |
| SPPR 50 M16   | 50 | 3  | M16 |
| SPPR 60 M16   | 60 | 4  | M16 |
| SPPR 43 M20   | 43 | 3  | M20 |
| SPPR 50 M20   | 50 | 4  | M20 |
| SPPR 60 M20   | 60 | 4  | M20 |
| SPPR 50 M24   | 50 | 4  | M24 |
| SPPR 60 M24   | 60 | 4  | M24 |