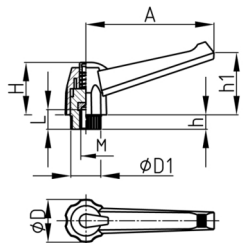


### Produktgruppe KLH9M

Klemmhebel aus PA 6 mit Messing-Gewindebuchse, verstellbar mit Druckknopf

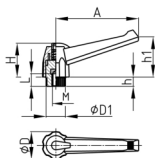


#### Standardfarben

- schwarz

#### Material

- Grundkörper: Polyamid 6 (PA 6)
- Gewindebuchse: Messing
- Druckknopf: Polyamid 6 (PA 6)



Bestellnummer	A	D	D1	H	h	h1	L	M
	mm	mm	mm	mm	mm	mm	mm	
KLH9M 40 / M5	40	18	12	22	6	30	10	M5
KLH9M 40 / M6	40	18	12	22	6	30	10	M6
KLH9M 60 / M6	60	21	12	30	7	39	17	M6
KLH9M 60 / M8	60	21	12	30	7	39	15	M8
KLH9M 80 / M6	80	30	12	36	10	52	17	M6
KLH9M 80 / M8	80	30	12	36	10	52	17	M8
KLH9M 80 / M10	80	30	12	36	10	52	17	M10
KLH9M 80 / M12	80	30	12	36	10	52	17	M12
KLH9M 100 / M8	100	34	12	40	11	73	17	M8
KLH9M 100 / M10	100	34	12	40	11	73	17	M10
KLH9M 100 / M12	100	34	12	40	11	73	17	M12