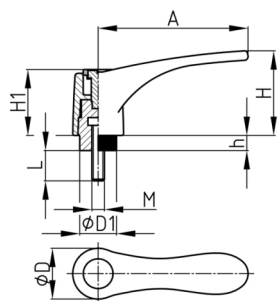


Produktgruppe KLH10B

Klemmhebel aus PA 6 mit Gewindebolzen, verstellbar mit Druckknopf

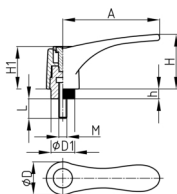


Standardfarben

- schwarz

Material

- Grundkörper: Polyamid 6 (PA 6)
- Gewindebolzen: Stahl verzinkt
- Druckknopf: Polyamid 6 (PA 6)



Bestellnummer	A	D	D1	H	h	H1	L	M
	mm	mm	mm	mm	mm	mm	mm	mm
KLH10B 80 / M6x25	80	27	12	41	9	31	25	M6
KLH10B 80 / M8x15	80	27	12	41	9	31	15	M8
KLH10B 80 / M8x20	80	27	12	41	9	31	20	M8
KLH10B 80 / M8x25	80	27	12	41	9	31	25	M8
KLH10B 80 / M8x30	80	27	12	41	9	31	30	M8
KLH10B 80 / M8x35	80	27	12	41	9	31	35	M8
KLH10B 80 / M8x40	80	27	12	41	9	31	40	M8
KLH10B 80 / M8x50	80	27	12	41	9	31	50	M8
KLH10B 80 / M8x55	80	27	12	41	9	31	55	M8
KLH10B 80 / M8x60	80	27	12	41	9	31	60	M8
KLH10B 80 / M8x70	80	27	12	41	9	31	70	M8
KLH10B 80 / M8x85	80	27	12	41	9	31	85	M8
KLH10B 80 / M8x90	80	27	12	41	9	31	90	M8
KLH10B 80 / M10x15	80	27	12	41	9	31	15	M10
KLH10B 80 / M10x20	80	27	12	41	9	31	20	M10
KLH10B 80 / M10x25	80	27	12	41	9	31	25	M10
KLH10B 80 / M10x30	80	27	12	41	9	31	30	M10
KLH10B 80 / M10x35	80	27	12	41	9	31	35	M10
KLH10B 80 / M10x40	80	27	12	41	9	31	40	M10
KLH10B 80 / M10x50	80	27	12	41	9	31	50	M10
KLH10B 80 / M10x60	80	27	12	41	9	31	60	M10
KLH10B 100 / M8x15	100	33	12	53	12	38	15	M8
KLH10B 100 / M8x20	100	33	12	53	12	38	20	M8
KLH10B 100 / M8x25	100	33	12	53	12	38	25	M8
KLH10B 100 / M8x30	100	33	12	53	12	38	30	M8



Walter Bethke GmbH & Co. KG

Technische Kunststoff - und Hybridprodukte

Bestellnummer	A	D	D1	H	h	H1	L	M
	mm	mm	mm	mm	mm	mm	mm	mm
KLH10B 100 / M8x35	100	33	12	53	12	38	35	M8
KLH10B 100 / M8x40	100	33	12	53	12	38	40	M8
KLH10B 100 / M10x15	100	33	12	53	12	38	15	M10
KLH10B 100 / M10x20	100	33	12	53	12	38	20	M10
KLH10B 100 / M10x25	100	33	12	53	12	38	25	M10
KLH10B 100 / M10x30	100	33	12	53	12	38	30	M10
KLH10B 100 / M10x35	100	33	12	53	12	38	35	M10
KLH10B 100 / M10x40	100	33	12	53	12	38	40	M10
KLH10B 100 / M10x50	100	33	12	53	12	38	50	M10
KLH10B 100 / M12x20	100	33	12	53	12	38	20	M12
KLH10B 100 / M12x25	100	33	12	53	12	38	25	M12
KLH10B 100 / M12x30	100	33	12	53	12	38	30	M12
KLH10B 100 / M12x35	100	33	12	53	12	38	35	M12
KLH10B 100 / M12x40	100	33	12	53	12	38	40	M12
KLH10B 100 / M12x50	100	33	12	53	12	38	50	M12