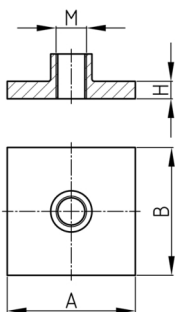


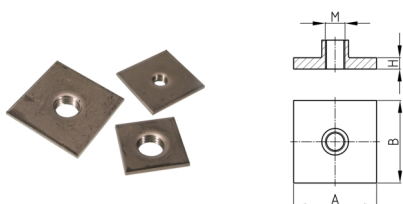
Produktgruppe SPP

Schweißplatten aus Edelstahl mit Gewinde, zum Anschweißen an Vierkantrohre



Material

- AISI 304 (A2)



Produktinformationen

- Die Schweißplatten stellen sicher, dass das Rohr nach dem Schweißen zu 100 % dicht ist.
- Die Schweiß-/Endplatten sind sowohl für quadratische als auch für rechteckige Rohre erhältlich.

| Bestellnummer | A | B | H | M |
|-----------------|----|----|-----|-----|
| | mm | mm | mm | |
| SPP 25x25 / M8 | 25 | 25 | 2,5 | M8 |
| SPP 25x25 / M10 | 25 | 25 | 3 | M10 |
| SPP 30x30 / M8 | 30 | 30 | 2,5 | M8 |
| SPP 30x30 / M10 | 30 | 30 | 3 | M10 |
| SPP 30x30 / M12 | 30 | 30 | 3 | M12 |
| SPP 35x35 / M8 | 35 | 35 | 2,5 | M8 |
| SPP 35x35 / M10 | 35 | 35 | 3 | M10 |
| SPP 35x35 / M12 | 35 | 35 | 3 | M12 |
| SPP 35x35 / M16 | 35 | 35 | 3 | M16 |
| SPP 40x40 / M8 | 40 | 40 | 2,5 | M8 |
| SPP 40x40 / M10 | 40 | 40 | 3 | M10 |
| SPP 40x40 / M12 | 40 | 40 | 3 | M12 |
| SPP 40x40 / M16 | 40 | 40 | 3 | M16 |
| SPP 40x40 / M20 | 40 | 40 | 4 | M20 |
| SPP 45x45 / M10 | 45 | 45 | 3 | M10 |
| SPP 45x45 / M12 | 45 | 45 | 3 | M12 |
| SPP 45x45 / M16 | 45 | 45 | 3 | M16 |
| SPP 45x45 / M20 | 45 | 45 | 4 | M20 |
| SPP 50x50 / M10 | 50 | 50 | 3 | M10 |
| SPP 50x50 / M12 | 50 | 50 | 3 | M12 |
| SPP 50x50 / M16 | 50 | 50 | 4 | M16 |
| SPP 50x50 / M20 | 50 | 50 | 4 | M20 |
| SPP 50x50 / M24 | 50 | 50 | 4 | M24 |



Walter Bethke GmbH & Co. KG

Technische Kunststoff - und Hybridprodukte

| Bestellnummer | A | B | H | M |
|-------------------|-----|-----|-----|-----|
| | mm | mm | mm | |
| SPP 60x60 / M16 | 60 | 60 | 4 | M16 |
| SPP 60x60 / M20 | 60 | 60 | 4 | M20 |
| SPP 60x60 / M24 | 60 | 60 | 4 | M24 |
| SPP 70x70 / M16 | 70 | 70 | 4 | M16 |
| SPP 70x70 / M20 | 70 | 70 | 4 | M20 |
| SPP 70x70 / M24 | 70 | 70 | 4 | M24 |
| SPP 80x80 / M16 | 80 | 80 | 4 | M16 |
| SPP 80x80 / M20 | 80 | 80 | 4 | M20 |
| SPP 80x80 / M24 | 80 | 80 | 4 | M24 |
| SPP 100x100 / M16 | 100 | 100 | 4 | M16 |
| SPP 100x100 / M20 | 100 | 100 | 4 | M20 |
| SPP 100x100 / M24 | 100 | 100 | 4 | M24 |
| SPP 50x25 / M8 | 50 | 25 | 2,5 | M8 |
| SPP 50x25 / M10 | 50 | 25 | 3 | M10 |
| SPP 50x25 / M12 | 50 | 25 | 3 | M12 |
| SPP 50x30 / M8 | 50 | 30 | 2,5 | M8 |
| SPP 50x30 / M10 | 50 | 30 | 3 | M10 |
| SPP 50x30 / M12 | 50 | 30 | 3 | M12 |
| SPP 50x30 / M16 | 50 | 30 | 4 | M16 |
| SPP 60x30 / M12 | 60 | 30 | 3 | M12 |
| SPP 60x30 / M16 | 60 | 30 | 3 | M16 |
| SPP 60x30 / M20 | 60 | 30 | 3 | M20 |
| SPP 60x40 / M12 | 60 | 40 | 3 | M12 |
| SPP 60x40 / M16 | 60 | 40 | 4 | M16 |
| SPP 60x40 / M20 | 60 | 40 | 4 | M20 |
| SPP 60x40 / M24 | 60 | 40 | 4 | M24 |
| SPP 80x40 / M16 | 80 | 40 | 4 | M16 |
| SPP 80x40 / M20 | 80 | 40 | 4 | M20 |
| SPP 80x40 / M24 | 80 | 40 | 4 | M24 |
| SPP 80x50 / M16 | 80 | 50 | 4 | M16 |
| SPP 80x50 / M20 | 80 | 50 | 4 | M20 |
| SPP 80x50 / M24 | 80 | 50 | 4 | M24 |
| SPP 80x60 / M16 | 80 | 60 | 4 | M16 |
| SPP 80x60 / M20 | 80 | 60 | 4 | M20 |
| SPP 80x60 / M24 | 80 | 60 | 4 | M24 |
| SPP 100x50 / M16 | 100 | 50 | 4 | M16 |
| SPP 100x50 / M20 | 100 | 50 | 4 | M20 |
| SPP 100x50 / M24 | 100 | 50 | 4 | M24 |