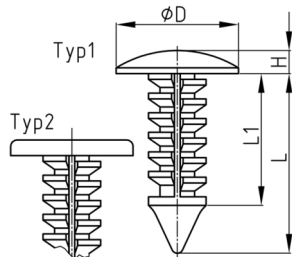


Produktgruppe HPT

Plattenbefestiger aus PA 6.6, auch als Tannenbaum-Clips bekannt

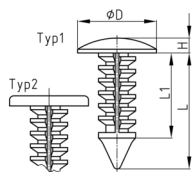


Standardfarben

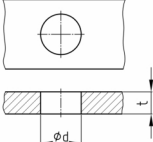
- schwarz

Material

- Polyamid 6.6 (PA 6.6)



Blech, Platte / Sheet, Panel



| Bestellnummer | d | D | H | L | L1 | t | Typ |
|---------------|-----|------|-----|------|------|----------|-----|
| | mm | mm | mm | mm | mm | mm | |
| HPT 27024020 | 3 | 5,5 | 1,5 | 16,8 | 14,5 | 4,0-12,0 | 2 |
| HPT 27024250 | 5 | 10 | 1 | 12 | 8,3 | 1,6-6,4 | 1 |
| HPT 27024030 | 5 | 11 | 1 | 12,6 | 9,2 | 1,7-8,0 | 2 |
| HPT 27024050 | 5 | 11 | 1 | 17,8 | 14,5 | 1,5-11,0 | 2 |
| HPT 27024100 | 6,4 | 15,9 | 1,5 | 16,5 | 14,5 | 3,6-10,0 | 1 |
| HPT 27024260 | 6,4 | 17,8 | 2,5 | 19,5 | 15 | 2,5-12,0 | 1 |
| HPT 27024290 | 10 | 21,5 | 4 | 28,3 | 22,6 | 1,5-20,0 | 1 |