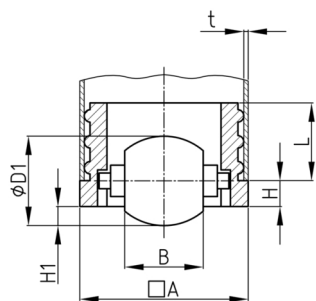


Produktgruppe VLR

Möbelrollen für Tischbeine aus Vierkantröhr

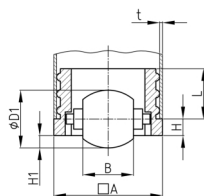


Standardfarben

- schwarz

Material

- Grundkörper: Polyamid (PA)
- Bolzen: Stahl
- Rolle: elastischer Thermoplast (TPE)



| Bestellnummer | A | B | D1 | H | H1 | L | t |
|---------------|----|----|----|----|----|------|-----|
| | mm | mm | mm | mm | mm | mm | mm |
| VLR 35x35x2 | 35 | 12 | 20 | 3 | 4 | 23,5 | 2 |
| VLR 40x40x1,5 | 40 | 18 | 25 | 3 | 7 | 23,5 | 1,5 |
| VLR 40x40x2 | 40 | 18 | 25 | 3 | 7 | 23,5 | 2 |