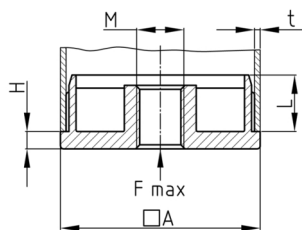


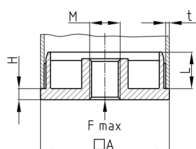
**Produktgruppe** ZN/Q

Gewindestopfen aus Zink-Druckguss für Vierkantrohre



**Material**

- Zink-Druckguß



| Bestellnummer        | A  | F max. | H  | L  | M       | t         |
|----------------------|----|--------|----|----|---------|-----------|
|                      | mm | kg     | mm | mm |         | mm        |
| ZN40 25x25x1,5       | 25 | 800    | 5  | 17 | M10x18  | 1,5       |
| ZN40 25x25x2         | 25 | 800    | 5  | 17 | M10x18  | 2         |
| ZN40 30x30x1,5       | 30 | 800    | 5  | 15 | M10x 18 | 1,5       |
| ZN40 30x30x2         | 30 | 800    | 5  | 17 | M10x18  | 2         |
| ZN40 30x30x2,5       | 30 | 800    | 5  | 17 | M10x18  | 2,5       |
| ZN40 40x40x1,7 (1,5) | 40 | 800    | 5  | 17 | M10x18  | 1,7 (1,5) |
| ZN40 40x40x2         | 40 | 800    | 5  | 17 | M10x18  | 2         |
| ZN40 40x40x2,5       | 40 | 500    | 5  | 15 | M10x18  | 2,5       |