

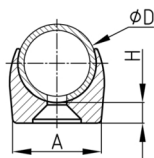
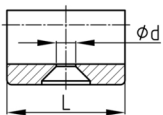


Walter Bethke GmbH & Co. KG

Technische Kunststoff - und Hybridprodukte

Product Group KSGW

Clamping shell glides made of LD-PE with drill hole

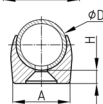
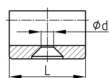


Standard Colours

- black

Material

- Base body: LD-Polyethylene (LD-PE)



Order Number	A	D	d	H	L
	mm	mm	mm	mm	mm
KSGW 12	16	12	5,5	6	30