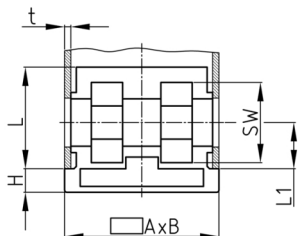


Product Group SER

Screw corner connectors made of PA with collar for rectangular tubes, hexagon nuts plugged in

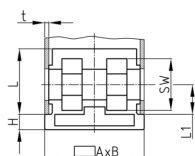


Standard Colours

- black

Material

- Base body: Polyamide (PA)



Product information

- For tubes lying on edge
- With collar for lateral tube conclusion
- The surface of the articles may vary due to production.
- Order-related production for individual article sizes! Please ask for minimum quantity.
- Fixing of rollers with threaded pin in vertical standing rectangular tubes.
- Fixing of wheels or adjustable feet of horizontally lying tubes.
- Right-angled connection to trusses

Product options on inquiry

- Special colours

Order Number	A	B	H	L	L1	WAF	t
	mm	mm	mm	mm	mm	mm	mm
SER 30x20x1,5 M8	30	20	4	37	15	13	1,5
SER 30x20x2 M8	30	20	4	36	15	13	2
SER 40x20x1,5-2 M8	40	20	2	41	30	13	1,5-2
SER 40x25x1,5 M8	40	25	1,8	41	30	13	1,5
SER 40x30x1,5 M10	40	30	2	42	30	17	1,5
SER 45x25x2 M10	45	25	2,5	39	20	17	2
SER 50x25x2 M10	50	25	2,8	32	20	17	2
SER 50x30x1,5 M10	50	30	2	42	30	17	1,5
SER 50x30x2 M10	50	30	6	31	20	17	2
SER 60x30x1,5 M10	60	30	6	31,5	20	17	1,5
SER 60x30x2 M10	60	30	5	35	20	17	2
SER 60x30x2,5 M10	60	30	6	31,5	20	17	2,5
SER 60x30x3 M10	60	30	6	31,5	20	17	3