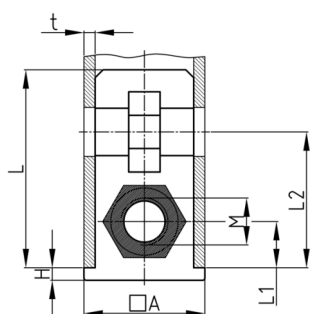


Product Group SEQM

Screw corner connectors made of PA with collar for square tubes and bright galvanized hexagon steel nut

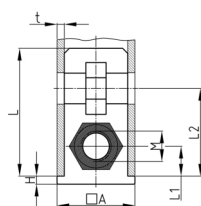


Standard Colours

- black

Material

- Base body: Polyamide (PA)
- Thread: zinc-plated steel



Product information

- With collar for lateral tube conclusion
- DIN 985 = with lock nut made of steel, bright zinc plated
- Fixing of wheels or adjustable feet of horizontally lying tubes.
- Right-angled connection to trusses
- Subsequent installation of shelf compartments in already existing constructions
- Invisible connections

Product options on inquiry

- Supplied with stainless steel nuts
- Special colours

| Order Number | A | H | L | L1 | L2 | M | t |
|---------------------------|----|-----|----|------|----|-----|------|
| | mm | mm | mm | mm | mm | | mm |
| SEQM 20x20x1,5 M8 | 20 | 2 | 42 | 10 | 25 | M8 | 1,5 |
| SEQM 20x20x2 M8 | 20 | 2 | 42 | 10 | 27 | M8 | 2 |
| SEQM 25x25x1,5 M8 | 25 | 2 | 43 | 12,5 | 27 | M8 | 1,5 |
| SEQM 25x25x1,5 M8 DIN 985 | 25 | 2 | 43 | 12,5 | 27 | M8 | 1,5 |
| SEQM 25x25x1,5 M10 | 25 | 2 | 42 | 12,5 | 30 | M10 | 1,5 |
| SEQM 30x30x1,25 M10 | 30 | 1,5 | 43 | 15 | 33 | M10 | 1,25 |
| SEQM 30x30x1,5 M8 | 30 | 4 | 40 | 15 | 32 | M8 | 1,5 |
| SEQM 30x30x2 M8 | 30 | 3 | 41 | 15 | 33 | M8 | 2 |
| SEQM 30x30x2 M10 | 30 | 2 | 43 | 15 | 33 | M10 | 2 |