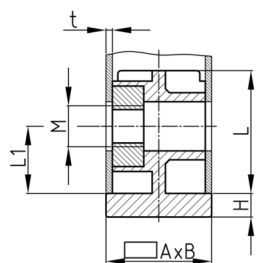


### Product Group SVFM

Screw corner connectors made of PA with collar for rectangular tubes and bright galvanized hexagon nut (Order-related production! Please ask for minimum quantity)

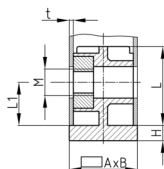


#### Standard Colours

- black

#### Material

- Base body: Polyamide (PA)



#### Product information

- For tubes lying flat
- Collar for end face pipe termination
- Order related production! Please ask for minimum quantity.
- Fixing of wheels or adjustable feet of horizontally lying tubes.

Order Number	A	B	H	L	L1	M	t
	mm	mm	mm	mm	mm		mm
SVFM 30x20x2 M8	30	20	2,5	37	15	M8	2
SVFM 50x25x2 M10	50	25	5	36	22	M10	2