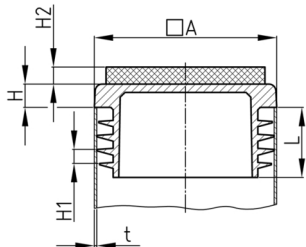


Product Group VLAf/Q

Lamella plugs made of polyethylene for square tubes with welded felt

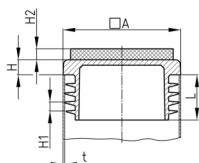
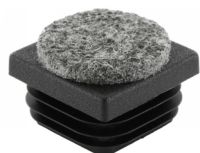


Standard Colours

- black RAL 9005

Material

- Base body: Polyethylene (PE)
- Slide base: synthetic needle felt (polyester)



Product information

- Lamellar plugs without specification of the pipe wall thickness are generally suitable for pipe wall thicknesses 1.5 - 2 mm. Please indicate the pipe wall thickness when ordering.
- The plugs are intended for use in pipes or equivalent bores with free passage corresponding to the clear nominal width of at least shaft length.
- For technical production reasons, a residual sprue may exceed the shaft length.
- Material and design of shafts guaranteed stop against drop out and easy assembling.
- The ribs are circularly closed or interrupted.
- The ribs are not suitable for sealing against fluids.

Product options on inquiry

- Special colours (colours, minimum quantities, set-up costs, pricing and surcharges)

Order Number	A	H	H1	H2	L	t
	mm	mm	mm	mm	mm	mm
VLAf 13	13	4	3	3,5	11,5	0,5-2
VLAf 15	15	3	3	3,5	11,5	0,8-2
VLAf 16	16	5	3	3,5	11,5	0,8-2
VLAf 18	18	5	3	3,5	11,5	1,5-3
VLAf 20	20	5	3	3,5	11,5	0,8-3
VLAf 22	22	5	3	3,5	11,5	0,8-3
VLAf 25	25	5	3	3,5	11,5	1-3
VLAf 30	30	5	3	3,5	11,5	1-2,5