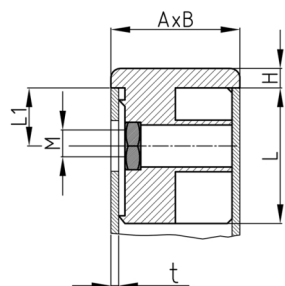


### Product Group SVOR

Screw corner connectors with collar made of PE for rectangular tubes and assembled hexagon nut

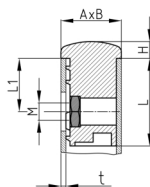
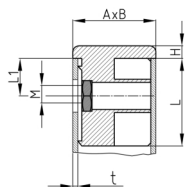


#### Standard Colours

- black

#### Material

- Base body: Polyethylene (PE)
- Nut: zinc-plated steel



- The load capacity of the connections is highly dependent on the condition of the pipes (weld seams, roughness, tolerances) as well as the foot/thread used. We therefore recommend carrying out your own tests to determine the values.
- L = nut alongside
- PP = material polypropylene

Order Number	A	B	H	L	L1	M	t
	mm	mm	mm	mm	mm		mm
SVOR 30X50X2 M10 L PP	30	50	5	36	20	M10	2
SVOR 30X60X2 M10 L PP	30	60	5	36	20	M10	2
SVOR 35X20X1,5 M8	35	20	5	33	20	M8	1,5
SVOR 35X20X1-1,5 M8	35	20	5	33	20	M8	1-1,5
SVOR 40X20X1,2 M8	40	20	5	38	20	M8	1,2
SVOR 50X30X1,5 M10	50	30	5	38	20	M10	1,5
SVOR 60X30X2 M10 PP	60	30	5	38	20	M10	2
SVOR 60X30X2 M8 PP	60	30	5	38	20	M8	2