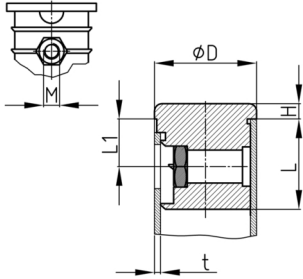


### Product Group SVOK

Screw corner connectors with collar made of PE for round tubes and assembled hexagon nut

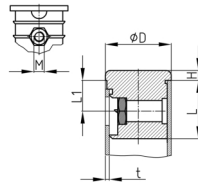


#### Standard Colours

- black

#### Material

- Base body: Polyethylene (PE)
- Nut: zinc-plated steel



- The load capacity of the connections is highly dependent on the condition of the pipes (weld seams, roughness, tolerances) as well as the foot/thread used. We therefore recommend carrying out your own tests to determine the values.
- P = without fixing pin

Order Number	D	H	L	L1	M	t
	mm	mm	mm	mm		mm
SVOK 35x1,5 M8	35	5	35	20	M8	1,5
SVOK 40x1,5-2 M8	40	5	35	22	M8	1,5-2
SVOK 45x1,5-2 M10	45	5	35	20	M10	1,5-2
SVOK 45x1,5-2 M10 P	45	5	35	20	M10	1,5-2