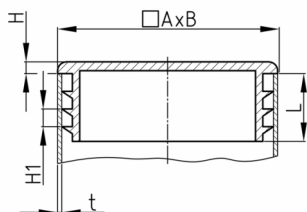


Product Group VSFL/RE

Lamella plugs made of PE with cover plate 2 mm for rectangular tubes

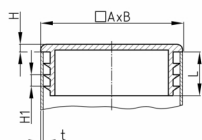
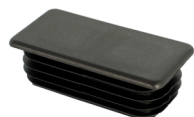


Standard Colours

- black RAL 9005

Material

- Polyethylene (PE)



Product information

- The plugs are intended for use in pipes or equivalent bores with free passage corresponding to the clear nominal width of at least shaft length.
- For technical production reasons, a residual sprue may exceed the shaft length.
- Lamellar plugs without specification of the pipe wall thickness are generally suitable for pipe wall thicknesses 1.5 - 2 mm. Please indicate the pipe wall thickness when ordering.
- Material and design of shafts guaranteed stop against drop out and easy assembling.
- Depending on the selected article, the surface finish can vary between polished and eroded.
- The ribs are circularly closed or interrupted.
- They are not suitable for sealing against fluids.
- The number of slats per plug varies between 2-4 slats.

Product options on inquiry

- Special colours (colours, minimum quantities, set-up costs, pricing and surcharges)
- With your engraved company logo (tooling costs, minimum quantities, set-up costs)
- With your tampon printed company logo (set-up costs, minimum quantities, printing costs)

Order Number	A	B	H	H1	L	t
	mm	mm	mm	mm	mm	mm
VSFL 20x15x1-2	20	15	2	3	11,5	1-2
VSFL 25x15x0,8-2,5	25	15	2	3	11,5	0,8-2,5
VSFL 25x20x1-2,5	25	20	2	3	11,5	1-2,5
VSFL 30x15x0,8-2,5	30	15	2	3	11,5	0,8-2,5
VSFL 30x20x0,8-3	30	20	2	3	11,5	0,8-3
VSFL 30x25x0,8-3	30	25	2	3	11,5	0,8-3
VSFL 35x20x0,8-2,5	35	20	2	3	11,5	0,8-2,5
VSFL 35x25x0,8-2,5	35	25	2	3	11,5	0,8-2,5
VSFL 40x20x0,8-2,5	40	20	2	3	11,5	0,8-2,5
VSFL 40x25x1-3	40	25	2	3	11,5	1-3
VSFL 40x30x1-2,5	40	30	2	3	11,5	1-2,5
VSFL 45x25x0,8-2,5	45	25	2	3	11,5	0,8-2,5
VSFL 45x30x0,8-2,5	45	30	2	3	11,5	0,8-2,5
VSFL 50x20x0,8-2,5	50	20	2	3	14,5	0,8-2,5
VSFL 50x25x0,8-2,5	50	25	2	3	14,5	0,8-2,5



Walter Bethke GmbH & Co. KG

Technische Kunststoff - und Hybridprodukte

Order Number	A	B	H	H1	L	t
	mm	mm	mm	mm	mm	mm
VSFL 50x30x1-2,5	50	30	2	3	14,5	1-2,5
VSFL 50x40x0,8-2,5	50	40	2	3	14,5	0,8-2,5
VSFL 60x20x1-2,5	60	20	2	3	14,5	1-2,5
VSFL 60x25x0,8-2,5	60	25	2	3	14,5	0,8-2,5
VSFL 60x30x1-2,5	60	30	2	3	14,5	1-,25
VSFL 60x40x1-2,5	60	40	2	3	14,5	1-2,5
VSFL 100x20x1,5-2,5	100	20	2	3	14,5	1,5-2,5
VSFL 100x25x1,5-2,5	100	25	2	3	14,5	1,5-2,5
VSFL 100x30x1,5-3	100	30	2	3	14,5	1,5-3
VSFL 110x30x2-3,5	110	30	2	3	14,5	2-3,5
VSFL 120x20x1,5-2,5	120	20	2	3	14,5	1,5-2,5
VSFL 120x25x1,5-3	120	25	2	3	14,5	1,5-3
VSFL 120x30x1-2	120	30	2	3	14,5	1-2
VSFL 200x40x2-3,5	200	40	2	4	19	2-3,5