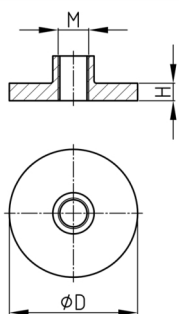


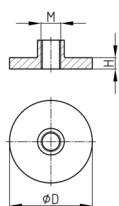
Product Group SPPR

Welding plates made of stainless steel with thread, ready to be welded to round tubes



Material

- AISI 304 (A2)



Product information

- The welding plates ensure that the tube is 100% tight after welding.

| Order Number | D | H | M |
|--------------|----|----|-----|
| | mm | mm | |
| SPPR 33 M8 | 33 | 3 | M8 |
| SPPR 38 M8 | 38 | 3 | M8 |
| SPPR 40 M8 | 40 | 3 | M8 |
| SPPR 33 M10 | 33 | 3 | M10 |
| SPPR 38 M10 | 38 | 3 | M10 |
| SPPR 40 M10 | 40 | 3 | M10 |
| SPPR 43 M10 | 43 | 3 | M10 |
| SPPR 50 M10 | 50 | 3 | M10 |
| SPPR 33 M12 | 33 | 3 | M12 |
| SPPR 38 M12 | 38 | 3 | M12 |
| SPPR 40 M12 | 40 | 3 | M12 |
| SPPR 43 M12 | 43 | 3 | M12 |
| SPPR 50 M12 | 50 | 3 | M12 |
| SPPR 38 M16 | 38 | 3 | M16 |
| SPPR 40 M16 | 40 | 3 | M16 |
| SPPR 43 M16 | 43 | 3 | M16 |
| SPPR 50 M16 | 50 | 3 | M16 |
| SPPR 60 M16 | 60 | 4 | M16 |
| SPPR 43 M20 | 43 | 3 | M20 |
| SPPR 50 M20 | 50 | 4 | M20 |
| SPPR 60 M20 | 60 | 4 | M20 |
| SPPR 50 M24 | 50 | 4 | M24 |
| SPPR 60 M24 | 60 | 4 | M24 |