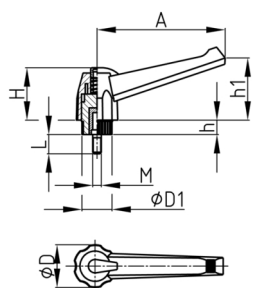


### Product Group KLH9B

Clamping lever made of PA 6 with threaded bolt, adjustable with push button

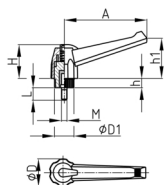


#### Standard Colours

- black

#### Material

- Base body: Polyamide (PA 6)
- Thread bolt: zinc-plated steel
- Push button: Polyamide (PA 6)



A	D	D1	H	h	h1	M	10	15	20	25	30	35	40	45	50	55	60	65	70	85	90	
mm	mm	mm	mm	mm	mm	mm	mm	mm	mm	mm	mm	mm	mm	mm	mm	mm	mm	mm	mm	mm	mm	mm
40	18	12	22	6	30	M5	x	x	x	x	x											
40	18	12	22	6	30	M6	x	x	x	x	x	x	x									
40	18	12	22	6	30	M8		x	x	x	x	x	x									
60	21	12	30	7	39	M6	x	x	x	x	x	x	x									
60	21	12	30	7	39	M8	x	x	x	x	x	x	x	x	x		x	x	x			
80	30	12	36	10	52	M6				x												
80	30	12	36	10	52	M8		x	x	x	x	x	x		x	x	x		x	x	x	
80	30	12	36	10	52	M10		x	x	x	x	x	x		x		x					
100	34	12	40	11	73	M8		x	x	x	x	x	x									
100	34	12	40	11	73	M10		x	x	x	x	x	x		x							
100	34	12	40	11	73	M12			x	x	x	x	x		x							

#### Ordering example

- Group + A + M + Thread Length ---> KLH9B - 40 M8x25