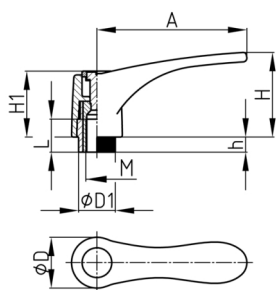


Product Group KLH10M

Clamping lever made of PA 6 with brass threaded bush, adjustable with push button

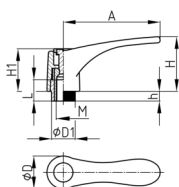


Standard Colours

- black

Material

- Base body: Polyamide (PA 6)
- Threaded bush: brass
- Push button: Polyamide (PA 6)



Order Number	A	D	D1	H	h	H1	L	M
	mm	mm	mm	mm	mm	mm	mm	mm
KLH10M 80 / M6	80	27	12	41	9	31	17	M6
KLH10M 80 / M8	80	27	12	41	9	31	17	M8
KLH10M 80 / M10	80	27	12	41	9	31	17	M10
KLH10M 80 / M12	80	27	12	41	9	31	17	M12
KLH10M 100 / M8	100	33	12	53	12	38	17	M8
KLH10M 100 / M10	100	33	12	53	12	38	17	M10
KLH10M 100 / M12	100	33	12	53	12	38	17	M12