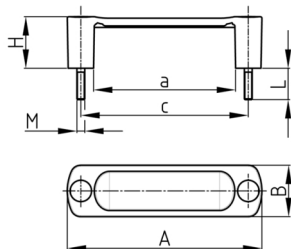


### Product Group BGES

U-handle made of PA with covers and threaded bolt, elliptical shaped

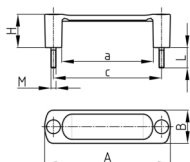


#### Standard Colours

- black

#### Material

- Base body: Polyamide (PA)
- Top cover: Polypropylene (PP)
- Thread: zinc-plated steel



Order Number	A	a	B	c	H	L	M
	mm	mm	mm	mm	mm	mm	
BGES 93,5 / M5	114	76	36	93,5	36	10	M5
BGES 93,5 / M6	114	76	36	93,5	36	12	M6
BGES 117 / M5	137	99	36	117	36	10	M5
BGES 117 / M6	137	99	36	117	36	12	M6