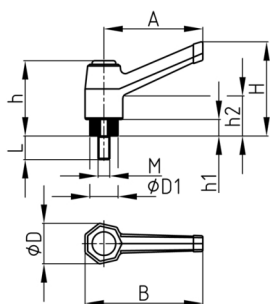


Product Group KLH4E

Clamping lever made of PA-GF with stainless steel threaded bolt, adjustable with push button

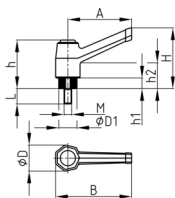


Standard Colours

- black

Material

- Base body: glass fibre reinforced polyamide (PA-GF)
- Threaded bolt: stainless steel
- Push button: Polyamide (PA)



Order Number	A	B	D	D1	H	h	h1	h2	L	M
	mm	mm	mm	mm	mm	mm	mm	mm	mm	mm
KLH4E 40 / M6x30	40	50	17	12	42	33	7	15	30	M6
KLH4E 40 / M8x30	40	50	17	12	42	33	7	15	30	M8
KLH4E 60 / M6x30	60	70	22	15	42	37	8	14	30	M6
KLH4E 60 / M6x50	60	70	22	15	42	37	8	14	50	M6
KLH4E 60 / M8x20	60	70	22	15	42	37	8	14	20	M8
KLH4E 60 / M8x30	60	70	22	15	42	37	8	14	30	M8
KLH4E 60 / M8x50	60	70	22	15	42	37	8	14	50	M8
KLH4E 80 / M10x30	80	95	27	19	59	49	9	20	30	M10
KLH4E 80 / M10x50	80	95	27	19	59	49	9	20	50	M10
KLH4E 80 / M12x30	80	95	27	19	59	49	9	20	30	M12
KLH4E 80 / M12x50	80	95	27	19	59	49	9	20	50	M12