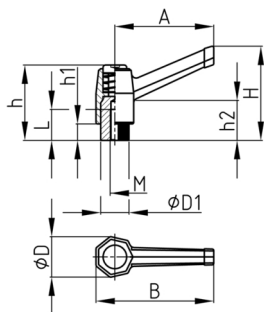


### Product Group KLH5M

Clamping lever made of PA-GF with brass threaded bush, adjustable with adjusting screw

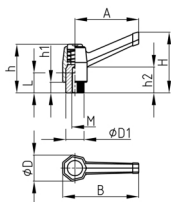


#### Standard Colours

- black

#### Material

- Base body: glass fibre reinforced polyamide (PA-GF)
- Threaded bush: brass
- Adjusting screw: zinc plated steel



Order Number	A	B	D	D1	H	h	h1	h2	L	M
	mm	mm	mm	mm	mm	mm	mm	mm	mm	mm
KLH5M 40 / M4	40	50	17	12	42	33	7	15	11	M4
KLH5M 40 / M5	40	50	17	12	42	33	7	15	11	M5
KLH5M 40 / M6	40	50	17	12	42	33	7	15	11	M6
KLH5M 60 / M6	60	70	22	15	42	37	8	14	16	M6
KLH5M 60 / M8	60	70	22	15	42	37	8	14	16	M8
KLH5M 80 / M8	80	95	27	19	59	49	9	20	16	M8
KLH5M 80 / M10	80	95	27	19	59	49	9	20	16	M10
KLH5M 80 / M12	80	95	27	19	59	49	9	20	16	M12
KLH5M 100 / M12	100	117	38	25	85	60	12	20	25	M12
KLH5M 100 / M14	100	117	38	25	85	60	12	20	20	M14
KLH5M 100 / M16	100	117	38	25	85	60	12	20	24	M16