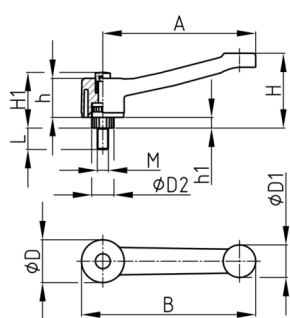


### Product Group KLH6B

Clamping lever made of PA-GF with threaded bolt, adjustable with push button

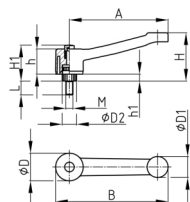


#### Standard Colours

- black

#### Material

- Base body: glass fibre reinforced polyamide (PA-GF)
- Thread bolt: zinc-plated steel
- Push button: Polyamide (PA)



Order Number	A	B	D	D1	D2	H	h	H1	h1	L	M
	mm	mm	mm	mm	mm	mm	mm	mm	mm	mm	mm
KLH6B 128 / M12x30	128	151	45	35	24	72	42	60	12	30	M12
KLH6B 128 / M12x40	128	151	45	35	24	72	42	60	12	40	M12
KLH6B 128 / M12x50	128	151	45	35	24	72	42	60	12	50	M12
KLH6B 128 / M14x30	128	151	45	35	24	72	42	60	12	30	M14
KLH6B 128 / M14x40	128	151	45	35	24	72	42	60	12	40	M14
KLH6B 128 / M14x50	128	151	45	35	24	72	42	60	12	50	M14
KLH6B 128 / M16x30	128	151	45	35	24	72	42	60	12	30	M16
KLH6B 128 / M16x40	128	151	45	35	24	72	42	60	12	40	M16
KLH6B 128 / M16x50	128	151	45	35	24	72	42	60	12	50	M16
KLH6B 148 / M12x30	148	171	45	35	24	78	42	60	12	30	M12
KLH6B 148 / M12x40	148	171	45	35	24	78	42	60	12	40	M12
KLH6B 148 / M12x50	148	171	45	35	24	78	42	60	12	50	M12
KLH6B 148 / M14x30	148	171	45	35	24	78	42	60	12	30	M14
KLH6B 148 / M14x40	148	171	45	35	24	78	42	60	12	40	M14
KLH6B 148 / M14x50	148	171	45	35	24	78	42	60	12	50	M14
KLH6B 148 / M16x30	148	171	45	35	24	78	42	60	12	30	M16
KLH6B 148 / M16x40	148	171	45	35	24	78	42	60	12	40	M16
KLH6B 148 / M16x50	148	171	45	35	24	78	42	60	12	50	M16