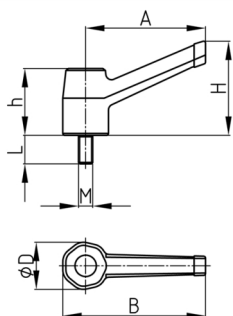


### Product Group KLH8B

Clamping lever with cover and threaded bolt

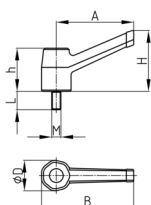


#### Standard Colours

- black

#### Material

- Base body: glass fibre reinforced polyamide (PA-GF)
- Thread bolt: zinc-plated steel
- Cover: anodized aluminium, self-adhesive



Order Number	A	B	D	H	h	L	M
	mm	mm	mm	mm	mm	mm	
KLH8B 40 / M5x20	40	50	17	33	22	20	M5
KLH8B 40 / M6x20	40	50	17	33	22	20	M6
KLH8B 60 / M6x30	60	70	22	38	26	30	M6
KLH8B 60 / M8x30	60	70	22	38	26	30	M8
KLH8B 80 / M10x30	80	95	27	50	33	30	M10
KLH8B 80 / M12x30	80	95	27	50	33	30	M12
KLH8B 100 / M14x40	100	117	38	73	42	40	M14
KLH8B 100 / M16x50	100	117	38	73	42	40	M16