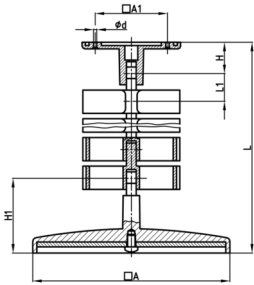


## Product Group

Rectangular cable chain set made of PP for cable feed to writing or working tables



### Standard Colours

- black
- white aluminium RAL 9006

### Material

- Base body: Polypropylene (PP)



Order Number	A	A1	d	H	H1	L	L1	Element(s) piece(s)
	mm	mm	mm	mm	mm	mm	mm	
KBKS 760 mm	120	55	4,5	24	40	760	19	40
KBKS 1260 mm	120	55	4,5	24	40	1260	19	66