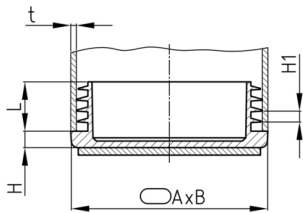


### Product Group OVLAF

Stacking chair glides made of PE with felt gliding surface

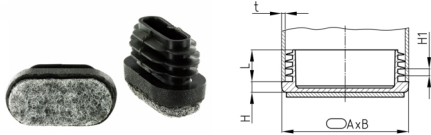


#### Standard Colours

- black RAL 9005

#### Material

- Base body: Polyethylene (PE)
- Slide base: synthetic needle felt (polyester)



#### Product information

- For technical production reasons, a residual sprue may exceed the shaft length.
- Material and design of shafts guaranteed stop against drop out and easy assembling.
- The ribs are circularly closed or interrupted.
- For a sufficiently smooth running mounting in tubes with larger wall thicknesses, it is recommended to chamfer the inside diameter of the tube (approx.  $0.3 - 0.5 \times 60^\circ$ ).

| Order Number        | A  | B  | H   | H1  | L    | t       |
|---------------------|----|----|-----|-----|------|---------|
|                     | mm | mm | mm  | mm  | mm   | mm      |
| OVLAF 30x15x1-2,5   | 30 | 15 | 5   | 3   | 11,5 | 1-2,5   |
| OVLAF 35x15x0,8-2,5 | 35 | 15 | 5,5 | 3,5 | 11,5 | 0,8-2,5 |
| OVLAF 35x20x1-3     | 35 | 20 | 5   | 3   | 11,5 | 1-3     |
| OVLAF 40x20x0,8-3   | 40 | 20 | 5   | 3   | 11,5 | 0,8-3   |
| OVLAF 50x20x1-3     | 50 | 20 | 5   | 3   | 11,5 | 1-3     |