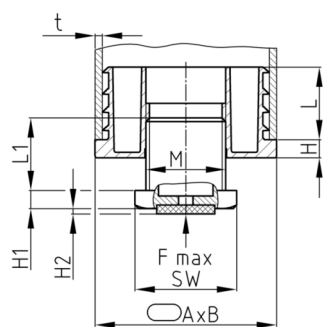


[Types.navProduktgruppe_Caption]
OVJAF

Adjustable feet made of PA 6 for flat oval tubes with one piece outer body, injection moulded thread and welded felt

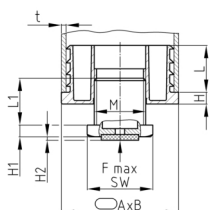


Standard Colours

- black RAL 9005

Material

- Base body: Polyamide (PA 6)
- Slide base: synthetic needle felt (polyester)



• The feet must be adjusted in an unloaded state. • The specified axial, static load capacity refers to a screw turned out 10 mm and resting on the full surface. • Adjusting plugs are not suitable as load gliders. • Adjusting plugs are not suitable for dynamic load.

• Please observe the material hints for polyamide (PA).

Product options on inquiry

- Further sizes
- Other special productions

Order Number	A	B	F max.	H	H1	H2	L	L1	M	WAF	t
	mm	mm	kg	mm	mm	mm	mm	mm		mm	mm
OVJAF 50x30x1,5-2/M22x25/8k	50	30	300	5	5	3	20	29,5	M22	28	1,5-2