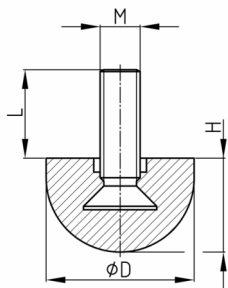


Product Group 92PA

Adjusting screws with hemispherical plastic base made of PA

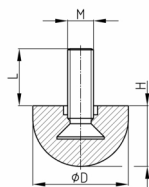


Standard Colours

- black

Material

- Base body: Polyamide (PA)
- Thread: zinc-plated steel



Product options on inquiry

- Further thread lengths/sizes
- Special colours according to RAL-System

Order Number	D	H	L	M
	mm	mm	mm	
92- 20 M8x16 PA	20	17	8,5	M8
92- 20 M8x20 PA	20	17	12	M8
92- 20 M8x25 PA	20	17	18	M8
92- 20 M8x30 PA	20	17	23	M8
92- 25 M8x16 PA	25	12	12,5	M8
92- 25 M8x20 PA	25	12	17	M8
92- 25 M8x25 PA	25	12	22	M8
92- 25 M8x30 PA	25	12	27	M8
92- 25 M8x40 PA	25	12	37	M8
92- 32 M10x20 PA	32	16	16	M10
92- 32 M10x25 PA	32	16	21	M10
92- 32 M10x30 PA	32	16	26	M10
92- 32 M10x40 PA	32	16	36	M10
92- 32 M10x50 PA	32	16	46	M10