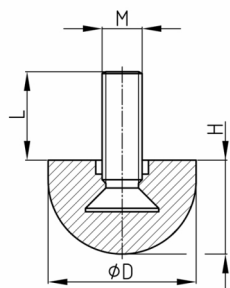


Product Group 92TPE

Zinc-plated adjustable screws with hemispherical plastic base made of TPE

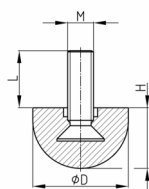


Standard Colours

- black

Material

- Base body: elastic thermoplast (TPE)
- Thread: zinc-plated steel



Product options on inquiry

- Further thread lengths/sizes
- Special colours according to RAL-System

| Order Number | D | H | L | M |
|------------------|----|----|-----|----|
| | mm | mm | mm | |
| 92- 20 M8x16 TPE | 20 | 17 | 8,5 | M8 |
| 92- 20 M8x20 TPE | 20 | 17 | 12 | M8 |
| 92- 20 M8x25 TPE | 20 | 17 | 17 | M8 |
| 92- 20 M8x30 TPE | 20 | 17 | 23 | M8 |