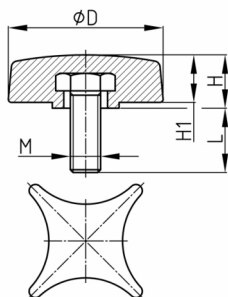


### Product Group KRGS

Cross handles made of PA with overmoulded threaded bolt

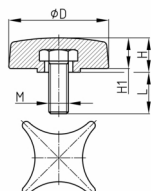


#### Standard Colours

- black

#### Material

- Base body: Polyamide (PA 6)
- Thread: zinc-plated steel



Order Number	D	H	H1	L	M
	mm	mm	mm	mm	
KRGS 30 M5x11	30	12	2	11	M5
KRGS 30 M5x15	30	12	2	15	M5
KRGS 30 M5x20	30	12	2	20	M5
KRGS 30 M5x25	30	12	2	25	M5
KRGS 30 M5x30	30	12	2	30	M5
KRGS 30 M5x35	30	12	2	35	M5
KRGS 30 M6x11	30	12	2	11	M6
KRGS 30 M6x15	30	12	2	15	M6
KRGS 30 M6x20	30	12	2	20	M6
KRGS 30 M6x25	30	12	2	25	M6
KRGS 30 M6x30	30	12	2	30	M6
KRGS 30 M6x35	30	12	2	35	M6
KRGS 30 M6x40	30	12	2	40	M6
KRGS 30 M6x45	30	12	2	45	M6