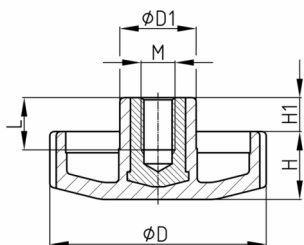


### Product Group VZC

Hand wheels made of PA with overmoulded threaded bush

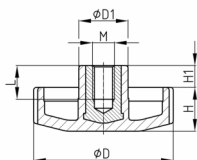


#### Standard Colours

- black

#### Material

- Base body: Polyamide (PA)
- Thread: zinc-plated steel



Order Number	D	D1	H	H1	L	M
	mm	mm	mm	mm	mm	
VZC 50 / M8x14	50	18	16	8	14	M8
VZC 50 / M10x16	50	18	16	8	16	M10