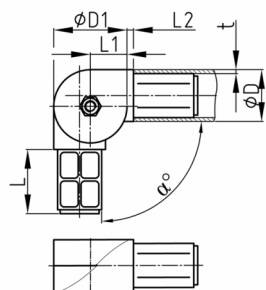


Product Group KGV/R

Two-way push-in connector made of PA 6.6 with joint for round tube

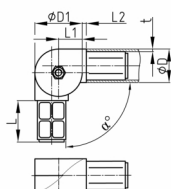


Standard Colours

- black

Material

- Base body: Polyamide (PA 6)
- Screw: zinc-plated steel
- Nut: zinc-plated steel



Product information

- The specified adjustment range can be infinitely adjusted.
- Delivery is completely assembled.

Order Number	α °	D mm	D1 mm	L mm	L1 mm	L2 mm	t mm
KGV 30x2	45-200	30	45	41	22,5	4	2
KGV 40x2	40-190	40	60	44	30	3	2