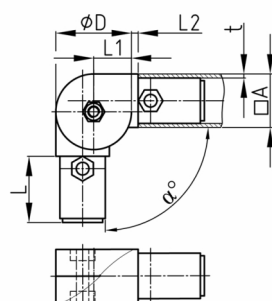


Product Group KGV/Q

Two-way push-in connector made of PA 6.6 with joint for square tube

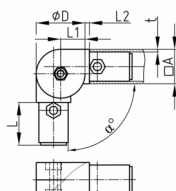


Standard Colours

- black

Material

- Base body: Polyamide (PA 6)
- Nut: zinc-plated steel
- Screw: zinc-plated steel



Product information

- The connector pins are designed in such a way that they can generally be fitted without tools in the case of dimensionally stable profiles.
- The specified adjustment range can be infinitely adjusted.
- Delivery is completely assembled.
- In the trunnions there are chambers WAF13 in which hexagon nuts (not included in the scope of delivery) can be inserted if necessary to fix the trunnions in the pipe

Order Number	α	A	D	L	L1	L2	t
	$^\circ$	mm	mm	mm	mm	mm	mm
KGV 30x30x2	45-200	30	42,5	42	21,25	3,5	2