

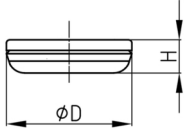


# Walter Bethke GmbH & Co. KG

Technische Kunststoff - und Hybridprodukte

## Product Group FTCAS

Self-adhesive round furniture glides made of PS and a sliding surface made of synthetic felt

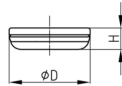


### Standard Colours

- brown
- white

### Material

- Base body: Polystyrene (PS), impact resistant
- Slide base: synthetic felt



### Product information

- The self-adhesive felt glides offer perfect gliding between tile joints thanks to the cup shape of the felt.
- The product can be used on chairs made of wood, metal or plastic.

Order Number	D	H
	mm	mm
FTCAS 17	17	7,5
FTCAS 20	20	7,5
FTCAS 24	24	7,5
FTCAS 28	28	7,5