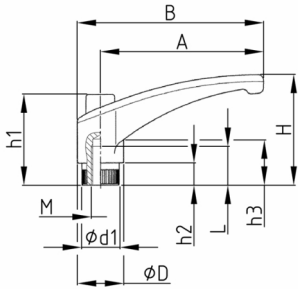


Product Group KLH3M

Clamping lever made of PA-GF with overmoulded brass threaded bush, adjustable with push button

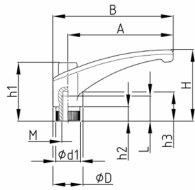


Standard Colours

- black

Material

- Base body: glass fibre reinforced polyamide (PA-GF)
- Thread: Brass



| Order Number | A | B | d1 | D | h1 | h2 | h3 | H | L | M |
|--------------|----|------|----|----|----|----|----|----|------|-----|
| | mm | mm | mm | mm | mm | mm | mm | mm | mm | mm |
| KLH3M 45 M4 | 45 | 52,5 | 12 | 15 | 31 | 4 | 15 | 33 | 6 | M4 |
| KLH3M 45 M5 | 45 | 52,5 | 12 | 15 | 31 | 4 | 15 | 33 | 10 | M5 |
| KLH3M 45 M6 | 45 | 52,5 | 12 | 15 | 31 | 4 | 15 | 33 | 11,5 | M6 |
| KLH3M 65 M6 | 65 | 75 | 16 | 20 | 37 | 6 | 19 | 45 | 16,5 | M6 |
| KLH3M 65 M8 | 65 | 75 | 16 | 20 | 37 | 6 | 19 | 45 | 17 | M8 |
| KLH3M 80 M8 | 80 | 91 | 19 | 23 | 45 | 12 | 24 | 56 | 17 | M8 |
| KLH3M 80 M10 | 80 | 91 | 19 | 23 | 45 | 12 | 24 | 56 | 22,5 | M10 |
| KLH3M 95 M10 | 95 | 108 | 22 | 27 | 53 | 13 | 27 | 64 | 22 | M10 |
| KLH3M 95 M12 | 95 | 108 | 22 | 27 | 53 | 13 | 27 | 64 | 27 | M12 |