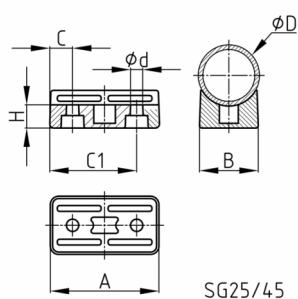


### Product Group SG

Shell glides made of polyamide for cantilever and skid-base chairs



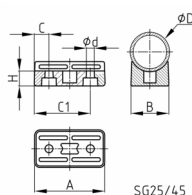
SG25/45

#### Standard Colours

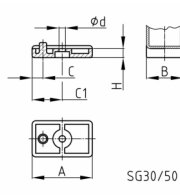
- black RAL 9005

#### Material

- Polyamide 6 (PA 6)



SG25/45



SG30/50

#### Product information

- Size 25 for round tube and size 30 for C-tube with rectangular profile and 30 mm breadth.

#### Product options on inquiry

- Special colours (colours, minimum quantities, set-up costs, pricing and surcharges)
- Made of soft PVC (PVC-P) for floor protection, soundproofing and non-skid

Order Number	A	B	C	C1	d	D	H
	mm	mm	mm	mm	mm	mm	mm
SG 25/45	45	25	9,5	36	5,8	25	10
SG 30/50	50	30	9	25	5,4	30	8