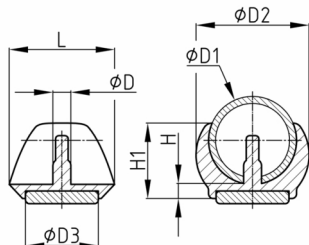


### Product Group KKSGUG

Ellipsoid-shaped clamping shell glides made of PA 6 with PTFE sliding surface

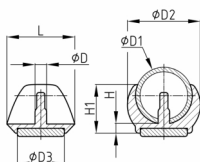


#### Standard Colours

- black RAL 9005

#### Material

- Base body: Polyamide (PA 6)
- Slide base: Polytetrafluorethylene (PTFE)



#### Product information

- Minimal ground friction due to PTFE - gliding base surface
- Very good noise damping due to plastic/rubber buffers in the sliding insert.
- For series KKSGx are patent rights registered.

#### Product options on inquiry

- Special colours (colours, minimum quantities, set-up costs, pricing and surcharges)
- With your engraved company logo (tooling costs, minimum quantities, set-up costs)

Order Number	Boring-Ø	D	D1	D2	D3	H	H1	L
	mm	mm	mm	mm	mm	mm	mm	mm
KKSGUG 22	5,8-5,9	5,7	21-24	28,5	20	5	20,5	26
KKSGUG 24	5,8-5,9	5,7	23-24	33,5	20	5	22	30,5
KKSGUG 25	5,8-5,9	5,7	24-26	34	20	4,5	22	31,5
KKSGUG 28	5,8-5,9	5,7	27-29	36	25	5	24	33,5
KKSGUG 30	5,8-5,9	5,7	30-32	40	25	5	24,5	34,5
KKSGUG 32	5,8-5,9	5,7	32-34	41,5	25	5	27	36
KKSGUG 35	6,5-6,6	6,4	34-36	44,5	25	5,5	27,5	38,5