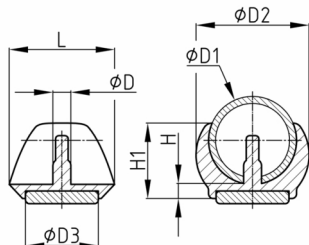


### Product Group KKSGH

Ellipsoid-shaped clamping shell glides made of PA 6 with noise-damping PVC-P/TPE anti-slip adhesive insert

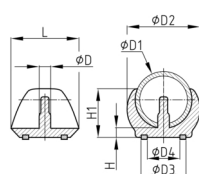
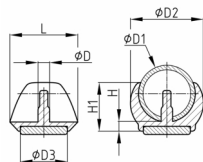


#### Standard Colours

- black RAL 9005

#### Material

- Base body: Polyamide (PA 6)
- Adhesive insert: plasticised PVC (PVC-P) / TPE



#### Product information

- Non-skid due to PVC (soft) / TPE gliding base
- For series KKSGx are patent rights registered.

#### Product options on inquiry

- Special colours (colours, minimum quantities, set-up costs, pricing and surcharges)

Order Number	Boring-Ø	D	D1	D2	D3	D4	H	H1	L
	mm	mm	mm	mm	mm		mm	mm	mm
KKSGH 20	5,8-5,9	5,7	18-20	28	15		5,5	19	25
KKSGH 22	5,8-5,9	5,7	21-24	28,5	20		4,5	20,5	26,5
KKSGH 25	5,8-5,9	5,7	24-26	34	20		5	22	31,5
KKSGH 28	5,8-5,9	5,7	27-29	36	25		5	24	33,5
KKSGH 30	5,8-5,9	5,7	30-32	40	25		4,5	24,5	34,5
KKSGH 32	5,8-5,9	5,7	32-34	41,5	25		5	27	36
KKSGH 35	6,5-6,6	6,4	34-36	44,5	25		5	27,5	38,5
KKSGH 60	6,5-6,6	6,4	59-61	67	34	26,5	7	44,5	48