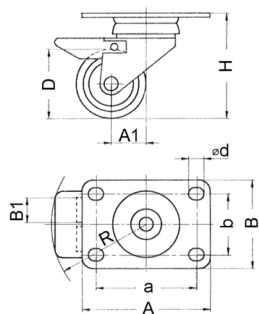


Product Group R 29-2

Swivel twin wheel castors with top plate and wheel brake, plain bearing

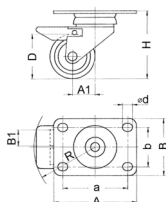


Standard Colours

- grey / core black

Material

- Rim: Polyamide (PA)
- Housing: zinc-plated steel
- Tyre: elastic thermoplast



| Order Number | A | B | a | b | A1 | B1 | d | D | H | R | Load capacity | Weight |
|--------------|----|----|----|------|----|----|----|----|----|----|---------------|--------|
| | mm | mm | mm | mm | mm | mm | mm | mm | mm | mm | kg | kg |
| R2971 | 92 | 64 | 72 | 44,5 | 24 | 18 | 8 | 50 | 76 | 72 | 70 | 0,38 |