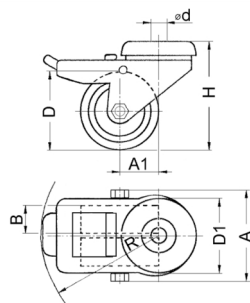


Product Group R 30-3

Swivel twin wheel castors with bolt hole and wheel and swivel brake, plain bearing

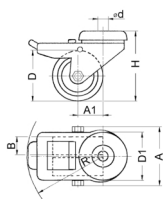


Standard Colours

- grey / core black

Material

- Rim: Polyamide (PA)
- Housing: zinc-plated steel
- Tyre: elastic thermoplast



Order Number	A	A1	B	d	D	D1	H	R	Weight	Load capacity
	mm	mm	mm	mm	mm	mm	mm	mm	kg	kg
R3081	75	41	24	10	75	47	99	95	0,64	90