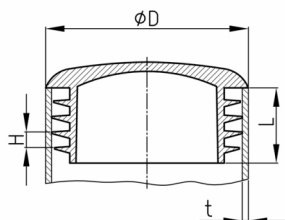


### Product Group SRL

Lamella plugs made of PE with strongly curved bottom

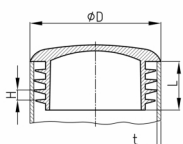


#### Standard Colours

- black RAL 9005
- signal white RAL 9003
- traffic grey A RAL 7042

#### Material

- Polyethylene (PE)



#### Product information

- Lamellar plugs without specification of the pipe wall thickness are generally suitable for pipe wall thicknesses 1.5 - 2 mm. Please indicate the pipe wall thickness when ordering.
- The ribs are not suitable for sealing against fluids.
- The plugs are intended for use in pipes or equivalent bores with free passage corresponding to the clear nominal width of at least shaft length.
- For technical production reasons, a residual sprue may exceed the shaft length.
- Material and design of shafts guaranteed stop against drop out and easy assembling.
- For sufficiently smooth installation in pipes with a greater wall thickness, we recommend chamfering the inside diameter of the pipe (approx. 0.3 - 0.5 x 60°).
- Depending on the selected article, the surface finish can vary between polished and eroded.
- The ribs are circularly closed or interrupted.
- The number of slats per plug varies between 2-4 slats.
- The stopper is not suitable for use as a glider
- As a rule, odd outside pipe diameters rounded to 1/10 mm (as part of the article or order number) indicate that these sizes originate from or are common in the Imperial system.

#### Product options on inquiry

- Special colours (colours, minimum quantities, set-up costs, pricing and surcharges)
- With your engraved company logo (tooling costs, minimum quantities, set-up costs)
- With your tampon printed company logo (set-up costs, minimum quantities, printing costs)
- Most plugs can also be made of suitable harder TPE's (TPE= thermoplastic elastomer --> extended range of operating temperature, noise absorbing, non-skid).

Order Number	D	H	L	t
	mm	mm	mm	mm
SRL 10x0,8-1,5	10	2,5	10	0,8-1,5
SRL 12x0,8-2	12	2,5	10	0,8-2
SRL 14x0,8-2	14	3	11,5	0,8-2
SRL 15x0,8-2	15	3	11,5	0,8-2
SRL 16x0,8-2	16	3	11,5	0,8-2
SRL 18x0,25-1,5	18	3	11,5	0,25-1,5
SRL 18x0,8-2,5	18	3	11,5	0,8-2,5
SRL 19x0,8-2,5	19	3	11,5	0,8-2,5
SRL 20x0,8-2,5	20	3	11,5	0,8-2,5



# Walter Bethke GmbH & Co. KG

Technische Kunststoff - und Hybridprodukte

Order Number	D	H	L	t
	mm	mm	mm	mm
SRL 21x0,8-2,5	21	3	11,5	0,8-2,5
SRL 22x0,8-3	22	3	11,5	0,8-3
SRL 22x2-4	22	3	11,5	2-4
SRL 23x0,8-3	23	3	11,5	0,8-3
SRL 25x1-2,5	25	3	11,5	1-2,5
SRL 25x3-5	25	3	11,5	3-5
SRL 26x0,8-3	26	3	11,5	0,8-3
SRL 27x0,8-3	27	3	11,5	0,8-3
SRL 28x0,8-2,5	28	3	11,5	0,8-2,5
SRL 30x0,8-2,5	30	3	11,5	0,8-2,5
SRL 30x2,5-4,5	30	3	11,5	2,5-4,5
SRL 32x0,8-3	32	3	11,5	0,8-3
SRL 32x2,5-5	32	3	11,5	2,5-5
SRL 34x0,8-3	34	3	11,5	0,8-3
SRL 34x3,5-4	34	3	11,5	3,5-4
SRL 35x1-3	35	3	11,5	1-3
SRL 35x3-5	35	3	11,5	3-5
SRL 36x1-3	36	3	11,5	1-3
SRL 37x1-3	37	3	11,5	1-3
SRL 38x1-3	38	3	11,5	1-3
SRL 38x3-5	38	3	11,5	3-5
SRL 40x1-3	40	3	11,5	1-3
SRL 40x3-5	40	3	11,5	3-5
SRL 42x0,8-2,5	42	3	11,5	0,8-2,5
SRL 42x2,5-5	42	3	11,5	2,5-5
SRL 45x0,8-3	45	3	11,5	0,8-3
SRL 45x3-5	45	3	11,5	3-5
SRL 48,4x1,2-3,6	48,4	3	11,5	1,2-3,6
SRL 48,4x2,5-5,2	48,4	3	11,5	2,5-5,2
SRL 50x1-2,5	50	3	11,5	1-2,5
SRL 50x2,5-4,5	50	3	11,5	2,5-4,5
SRL 50x4,5-6,5	50	3	11,5	4,5-6,5
SRL 55x1-3	55	3	14,5	1-3
SRL 55x3-5	55	3	14,5	3-5
SRL 57,2x1,2-2,7	57,2	3	14,5	1,2-2,7
SRL 60x1-3	60	4	18	1-3
SRL 60x3-5	60	3	18	3-5
SRL 65x1,5-3,5	65	4,5	21	1,5-3,5
SRL 65x3-5	65	4,5	21	3-5
SRL 70 x1-3,5	70	4,5	21	1-3,5
SRL 75x1-2,5	75	4,5	21	1-2,5
SRL 75x3-5	75	4,5	21	3-5
SRL 76,2x1,5-3,5	76,2	4,5	21	1,5-3,5
SRL 76,2x3,5-6	76,2	4,5	21	3,5-6
SRL 88,9x1,8-3,5	88,9	4,5	21	1,8-4