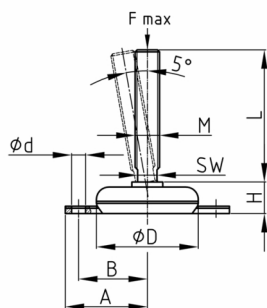


Product Group MFMB2

Machine feet made of stainless steel with rubber base and fixing straps

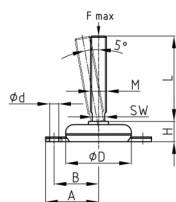


Standard Colours

- black

Material

- Thread: AISI 304 (A2)
- Rubber: NBR 72 Shore



Product information

- The cast-in mounting plate ensures that the foot dampens vibrations even after it has been fixed to the floor.
- The machine foot can be fixed to the floor.
- The rounded and hygienic design of this type enables easy and quick cleaning.
- The embedded rubber meets the USDA standard for rubber products.
- The machine foot can compensate for uneven floors up to 5°.
- The load capacity of the screw (buckling length!) may be less than indicated in the table.

D	A	B	H	d	F max.	M	WAF	50	70	100	150	180	230	310
mm	mm	mm	mm	mm	kg		mm	mm	mm	mm	mm	mm	mm	mm
75	67	52	22	14,85	800	M10	8	x	x	x	x			
75	67	52	22	14,85	800	M12	10	x	x	x	x	x	x	
75	67	52	22	14,85	800	M16	13		x	x	x	x	x	x
75	67	52	22	14,85	800	M20	17		x	x	x	x	x	x
75	67	52	22	14,85	800	M24	19		x	x	x	x	x	x
75	67	52	22	14,85	800	M30	24				x	x	x	x

Ordering example

- Group + D + M + Thread Length ---> MFMB2 75 M16 x 100