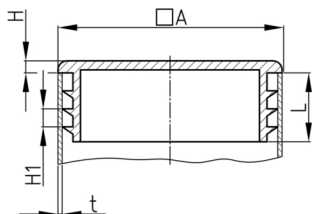


### Product Group VSFL

Lamella plugs made of polyethylene with cover plate 2 mm for square tubes

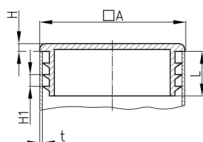


#### Standard Colours

- black RAL 9005

#### Material

- Polyethylene (PE)



#### Product information

- The plugs are intended for use in pipes or equivalent bores with free passage corresponding to the clear nominal width of at least shaft length.
- For technical production reasons, a residual sprue may exceed the shaft length.
- Lamellar plugs without specification of the pipe wall thickness are generally suitable for pipe wall thicknesses 1.5 - 2 mm. Please indicate the pipe wall thickness when ordering.
- Material and design of shafts guaranteed stop against drop out and easy assembling.
- Depending on the selected article, the surface finish can vary between polished and eroded.
- The ribs are circularly closed or interrupted.
- They are not suitable for sealing against fluids.
- The number of slats per plug varies between 2-4 slats.

#### Product options on inquiry

- Special colours (colours, minimum quantities, set-up costs, pricing and surcharges)
- With your engraved company logo (tooling costs, minimum quantities, set-up costs)
- With your tampon printed company logo (set-up costs, minimum quantities, printing costs)

Order Number	A	H	H1	L	t
	mm	mm	mm	mm	mm
VSFL 20x20x0,8-3	20	2	3	11,5	0,8-3
VSFL 25x25x0,8-2,5	25	2	3	11,5	0,8-2,5
VSFL 30x30x1-2,5	30	2	3	11,5	1-2,5
VSFL 35x35x0,8-2,5	35	2	3	14,5	0,8-2,5
VSFL 40x40x1-2,5	40	2	3	14,5	1-2,5
VSFL 45x45x1-2,5	45	2	3	14,5	1-2,5
VSFL 50x50x1-2,5	50	2	3	14,5	1-2,5
VSFL 140x140x4-6	140	3	6	35	4-6