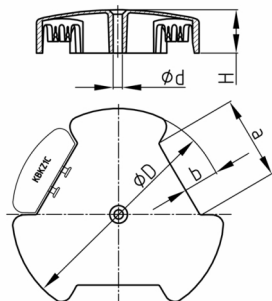


Product Group KBKZ1B

3-ways-manifold made of PP with 3x120° junction boxes for cable chains KBKCL, KBKFLII und KBKCUB

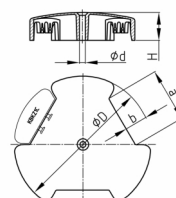


Standard Colours

- black
- silver
- white

Material

- Polypropylene (PP)



Product information

- The patented distributor makes the cable chain a network-capable cable routing system.
- Not needed connecting sockets can be closed by covering cap "KBKZ1C" (please order separately).
- The manifold is clamped onto the cable chain without tools via coupling links.
- Manifold can be used fixed by a central fixing hole and as cable outlet.
- Tread-proof for short periods up to approx. 100 kg

Order Number	a	b	d	D	H
	mm	mm	mm	mm	mm
KBKZ1B/Switch (Cube +CL +FLII)	55	25	6,5	148	30