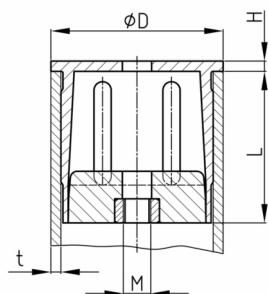


### Product Group RVB 180/2

Multi-purpose, friction-locking 90 Grad connectors for round and square tubes made of PA

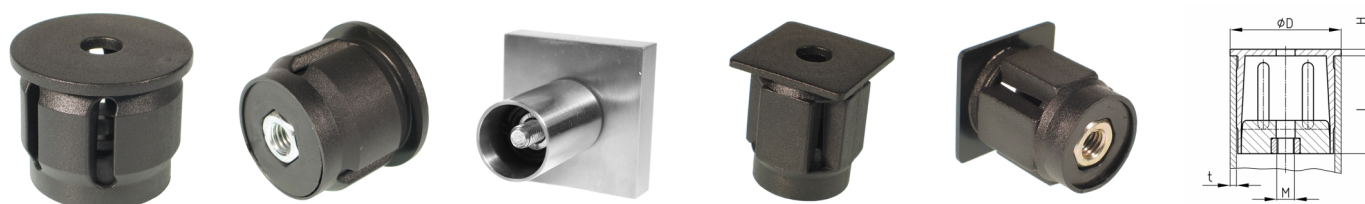


#### Standard Colours

- black RAL 9005

#### Material

- Base body: Polyamide (PA)
- Nut: zinc-plated steel



#### Product information

- Due to the significant expander effect usage of thin-walled tubes in connection with less strength is not recommendable (soft flexible Aluminium and plastic with tube wall thickness 1 mm).
- The screw which screws down the pre-assembled cone nut (positioned in the connector) reaches through the profile which has to be fixed under 90° - this screw is not part of the delivery and will be assigned and assembled by the customer after fixing of needed length.
- The pull-out strength depends mainly on the pipe tolerance and the surface condition of the inner pipe (smooth coatings that protrude into the inner pipe should be avoided, lubricant residues should be removed).
- Tube connectors are supplied pre-assembled.
- The connector is pressed into tube 1 up to the collar stop and then frictionally screwed/tightened through tube 1 with the flat counterpart.
- With dry, bare, oil- and coating-free pipes with sufficient strength, high pull-out strengths can be achieved with relatively low tightening torques.
- The connections can be tightened up to the cone stop. However, the pipe strength must be observed (pipe expansion).
- For 90° connections of round tubes to profiles such as panels, walls, flat profiles, cabinets or enclosures.

#### Product options on inquiry

- Further sizes (nominal-Ø and wall thickness of tube)

Order Number	D	H	L	M	t
	mm	mm	mm		mm
RVB 180/2 15x1	15	1,5	20	M6	1
RVB 180/2 16x1	16	1,5	20	M6	1
RVB 180/2 16x1,5	16	1,5	20	M6	1,5
RVB 180/2 18x1	18	1,5	20	M6	1
RVB 180/2 18x1,5	18	1,5	20	M6	1,5
RVB 180/2 20x1	20	1,5	20	M6	1
RVB 180/2 20x1,5	20	1,5	20	M6	1,5
RVB 180/2 22x1	22	1,5	20	M6	1
RVB 180/2 22x1,5	22	1,5	20	M6	1,5
RVB 180/2 23x1	23	1,5	20	M6	1
RVB 180/2 24x1	24	1,5	20	M6	1
RVB 180/2 24x1,5	24	1,5	20	M6	1,5
RVB 180/2 25x1	25	1,5	26	M6	1



# Walter Bethke GmbH & Co. KG

Technische Kunststoff - und Hybridprodukte

Order Number	D	H	L	M	t
	mm	mm	mm		mm
RVB 180/2 25x1,5	25	1,5	26	M6	1,5
RVB 180/2 25x2	25	1,5	26	M6	2
RVB 180/2 26x1	26	1,5	26	M6	1
RVB 180/2 26x1,5	26	1,5	26	M6	1,5
RVB 180/2 26x2	26	1,5	26	M6	2
RVB 180/2 26x2,5	26	1,5	26	M6	2,5
RVB 180/2 27x1	27	1,5	26	M6	1
RVB 180/2 27x1,5	27	1,5	26	M6	1,5
RVB 180/2 27x2	27	1,5	26	M6	2
RVB 180/2 27x2,5	27	1,5	26	M6	2,5
RVB 180/2 28x1	28	1,5	26	M6	1
RVB 180/2 28x1,5	28	1,5	26	M6	1,5
RVB 180/2 28x2	28	1,5	26	M6	2
RVB 180/2 28x2,5	28	1,5	26	M6	2,5
RVB 180/2 30x1	30	2	26	M6	1
RVB 180/2 30x1,5	30	2	26	M6	1,5
RVB 180/2 30x2	30	2	26	M6	2
RVB 180/2 32x1	32	2	26	M6	1
RVB 180/2 32x1,5	32	2	26	M6	1,5
RVB 180/2 32x2	32	2	26	M6	2
RVB 180/2 32x2,5	32	2	26	M6	2,5
RVB 180/2 38x1	38	2,5	29	M8	1
RVB 180/2 38x1,5	38	2,5	29	M8	1,5
RVB 180/2 38x2	38	2,5	29	M8	2
RVB 180/2 40x1,5	40	2,5	29	M8	1,5
RVB 180/2 40x2	40	2,5	29	M8	2
RVB 180/2 40x2,5	40	2,5	29	M8	2,5
RVB 180/2 40x3	40	2,5	29	M8	3
RVB 180/2 25x25x1,5	25x25	1,5	26	M6	1,5