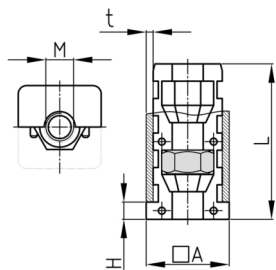


Product Group EBQMV

Assembled expander plugs with collar made of PA for square tubes with one hexagon nut (in the front)

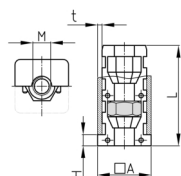
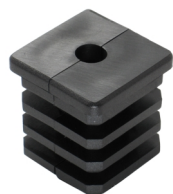


Standard Colours

- black

Material

- Base body: Polyamide (PA)
- Nut: zinc-plated steel



Product information

- These two-piece expander bushes with collar have conical chambers for hexagon nuts and screws. Tightening of the thread presses the outer wall of the insert against the inner tube wall (rawle plug effect). This effect requires entire tightening of the thread.
- The bushings are designed for precisely defined wall thicknesses according to the specifications in the table.
- The load capacity data refer to the use in steel tubes.
- Order-related production for individual article sizes! Please ask for minimum quantity.
- OL = without ribs
- LG = special type with 3 nut cavities
- Use as threaded plugs in combination with adjustable feet or adjusting screws -> see category "Adjustment and levelling parts" - Expander effect only with fully tightened adjusting screw!
- Tube extensions (1 expander with nut and 1 expander with screw)
- Fixing of wheels and castors

| Order Number | A | H | L | M | t | F max. |
|-------------------------------|-------|-----|----|-----|---------|--------|
| | mm | mm | mm | | mm | kg |
| EBQMV 20x20x1,5 /M 6 | 20 | 0,5 | 42 | M6 | 1,5 | 150 |
| EBQMV 20x20x1,5 /M8 | 20 | 5 | 42 | M8 | 1,5 | 300 |
| EBQMV 20x20x1,5 /M8 OL | 20 | 5 | 42 | M8 | 1,5 | 300 |
| EBQMV 22x22x1,5 /M8 | 22 | 5 | 40 | M8 | 1,5 | 300 |
| EBQMV 25x25x1,5 /M8 | 25 | 5 | 41 | M8 | 1,5 | 300 |
| EBQMV 25x25x1,5 /M10 | 25 | 5 | 42 | M10 | 1,5 | 300 |
| EBQMV 25x25x1,5 /M12 | 25 | 5 | 37 | M12 | 1,5 | 300 |
| EBQMV 30x30x1,5 /M8 | 30 | 5 | 42 | M8 | 1,5 | 300 |
| EBQMV 30x30x1,5 /M10 | 30 | 5 | 42 | M10 | 1,5 | 300 |
| EBQMV 30x30x2 /M8 | 30 | 5 | 42 | M8 | 2 | 300 |
| EBQMV 30x30x2 /M10 | 30 | 5 | 42 | M10 | 2 | 300 |
| EBQMV 31,75x31,75x1,2-1,6/M10 | 31,75 | 5 | 37 | M10 | 1,2-1,6 | 300 |
| EBQMV 32x32x2 /M10 | 32 | 5 | 37 | M10 | 2 | 300 |
| EBQMV 35x35x1,6 /M10 | 35 | 5 | 37 | M10 | 1,6 | 300 |
| EBQMV 35x35x2 /M10 | 35 | 5 | 42 | M10 | 2 | 300 |



Walter Bethke GmbH & Co. KG

Technische Kunststoff - und Hybridprodukte

| Order Number | A | H | L | M | t | F max. |
|--------------------------|------|----|----|-----|-------|--------|
| | mm | mm | mm | | mm | kg |
| EBQMV 38x38x1,5 /M10 | 38 | 5 | 36 | M10 | 1,5 | 300 |
| EBQMV 38x38x1,5 /M12 | 38 | 5 | 36 | M12 | 1,5 | 300 |
| EBQMV 40x40x1,5 /M10 | 40 | 5 | 42 | M10 | 1,5 | 300 |
| EBQMV 40x40x2 /M10 | 40 | 5 | 42 | M10 | 2 | 300 |
| EBQMV 40x40x2 /M10 LG | 40 | 5 | 88 | M10 | 2 | 300 |
| EBQMV 40x40x2 /M12 | 40 | 5 | 40 | M12 | 2 | 300 |
| EBQMV 40x40x3 /M10 | 40 | 5 | 37 | M10 | 3 | 300 |
| EBQMV 50x50x1,5 /M10 | 50 | 5 | 37 | M10 | 1,5 | 300 |
| EBQMV 50x50x1,5 /M12 | 50 | 5 | 37 | M12 | 1,5 | 300 |
| EBQMV 50x50x2 /M12 | 50 | 5 | 37 | M12 | 2 | 300 |
| EBQMV 50x50x2,5-3 /M12 | 50 | 5 | 39 | M12 | 2,5-3 | 300 |
| EBQMV 50,8x50,8x1,6 /M10 | 50,8 | 5 | 38 | M10 | 1,6 | 300 |
| EBQMV 60x60x2 /M10 | 60 | 5 | 38 | M10 | 2 | 300 |
| EBQMV 60x60x2,5 /M10 | 60 | 5 | 41 | M10 | 2,5 | 300 |
| EBQMV 70x70x2 /M10 | 70 | 5 | 42 | M10 | 2 | 300 |