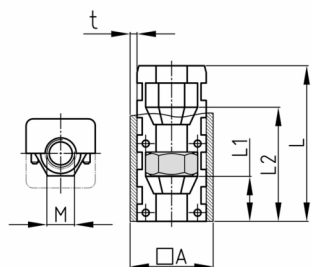


Product Group EVQMV

Assembled expander connectors without collar made of PA for square tubes with one hexagon nut (in the front)

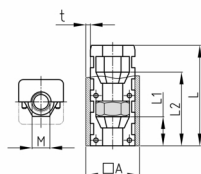


Standard Colours

- black

Material

- Base body: Polyamide (PA)
- Nut: zinc-plated steel



Product information

- These two-part expander connectors without collar have tapered conical cavities for hexagon nuts or screws. Tightening of the thread presses the connector against inner tube wall (rawle plug effect), providing a connection resistant to tension. The intensity of this resistance depends to a degree from the quality of the tubes (tolerances, roughness, welding seam, etc.) and as well the torque of the tightening. We advise to check the application beforehand.
- Stepped bores in the tube (outer bore larger than the diameter of the screw head, inner hole suitable for the respective thread) and use of slotted or hexagon socket screws allow high extraction forces without deformation of the tube wall.
- Order-related production for individual article sizes! Please ask for minimum quantity.
- SO = this dimension has an easier fit than standard and can be pressed in to standard wall thickness without the help of tools
- Right-angled connection to trusses
- Tube extensions (1 expander with nut and 1 expander with screw)
- Subsequent installation of shelf compartments in already existing constructions
- Frequently disassembled and reassembled racks
- Invisible connections

Order Number	A	L	L1	L2	M	t
	mm	mm	mm	mm		mm
EVQMV 15x15x1 / M6	15	42	12	32	M6	1
EVQMV 18x18x1,5 / M8	18	43	12	32	M8	1,5
EVQMV 20x20x1 / M6	20	42	21	32	M6	1
EVQMV 20x20x1 / M8 kurz	20	30	12	0	M8	1
EVQMV 20x20x1 / M8	20	43	12	32	M8	1
EVQMV 20x20x1,5 / M6 SO	20	42	12	32	M6	1,5
EVQMV 20x20x1,5 / M6	20	42	12	32	M6	1,5
EVQMV 20x20x1,5 / M8	20	43	12	32	M8	1,5
EVQMV 20x20x2 / M8	20	43	12	32	M8	2
EVQMV 22x22x1,5 / M6	22	41	12	32	M6	1,5
EVQMV 22x22x1,5 / M8	22	42	12	32	M8	1,5
EVQMV 25x25x1,5 / M8	25	43	12	32	M8	1,5
EVQMV 25x25x1,5/M 8 DIN 985	25	42	10	30	M8	0,15
EVQMV 25x25x1,5 / M10	25	42	10	30	M10	1,5



Walter Bethke GmbH & Co. KG

Technische Kunststoff - und Hybridprodukte

Order Number	A	L	L1	L2	M	t
	mm	mm	mm	mm		mm
EVQMV 25x25x2 / M8	25	43	12	32	M8	2
EVQMV 30x30x1,5 / M 8	30	41	10	30	M8	1,5
EVQMV 30x30x1,5 / M10	30	42	10	30	M10	1,5
EVQMV 30x30x2 / M8	30	41	12	32	M8	2
EVQMV 30x30x2 / M10	30	43	10	30	M10	2
EVQMV 35x35x2 / M10	35	42	10	30	M10	2
EVQMV 40x40x1,2 / M10	40	40	10	30	M10	1,2
EVQMV 40x40x1,2 / M12	40	40	8	28	M12	1,2
EVQMV 40x40x2 / M10	40	42	10	30	M10	2
EVQMV 40x40x3 / M8	40	42	11	31	M8	3
EVQMV 40x40x3 / M10	40	41	10	30	M10	3
EVQMV 45x45x1,5 / M10	45	39	6	26	M10	1,5