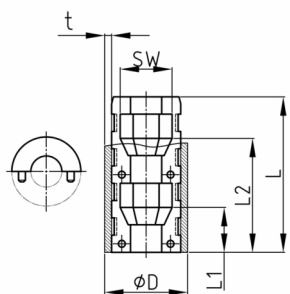


Product Group EVRU

Assembled expander connectors without collar made of PA for round tubes, hexagon nuts or screws plugged

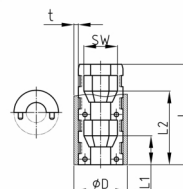
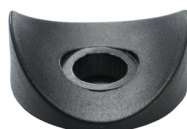


Standard Colours

- black

Material

- Polyamide (PA)



Product information

- These two-part expander connectors without collar have tapered conical cavities for hexagon nuts or screws. Tightening of the thread presses the connector against inner tube wall (rawle plug effect), providing a connection resistant to tension. The intensity of this resistance depends to a degree from the quality of the tubes (tolerances, roughness, welding seam, etc.) and as well the torque of the tightening. We advise to check the application beforehand.
- Stepped bores in the tube (outer bore larger than the diameter of the screw head, inner hole suitable for the respective thread) and use of slotted or hexagon socket screws allow high extraction forces without deformation of the tube wall.
- Order-related production for individual article sizes! Please ask for minimum quantity.
- OL = without ribs
- SO = dimensions deviate from series standard
- SO* = without mounting for saddle spacer EVDRAD
- Right-angled connection to trusses
- Tube extensions (1 expander with nut and 1 expander with screw)
- Subsequent installation of shelf compartments in already existing constructions
- Frequently disassembled and reassembled racks
- Invisible connections
- Right-angled connection of round tubes with different diameters (only for thread M8 and in combination with group "EVDRAD" - on request)

Order Number	D	L	L1	L2	WAF	t
	mm	mm	mm	mm	mm	mm
EVRU 16x0,75 / M6	16	43	12	32	10	0,75
EVRU 16x1 / M6	16	42	12	32	10	1
EVRU 19x1,5 / M6	19	39	12	32	10	1,5
EVRU 20x1 / M6	20	42	12	32	10	1
EVRU 20x1 / M 8 SO*	20	42	10	30	13	1
EVRU 20x1 / M8	20	42	12	32	13	1
EVRU 20x1,5 / M6	20	42	12	32	10	1,5
EVRU 20x1,5 / M8	20	42	12	32	13	1,5
EVRU 20x1,5 / M 8 SO*	20	42	10	30	13	1,5
EVRU 20x2 / M 8 SO*	20	42	10	30	13	2
EVRU 20x2 / M8	20	42	12	32	13	2
EVRU 22x1 / M5	22	42	14	33	8	1



Walter Bethke GmbH & Co. KG

Technische Kunststoff - und Hybridprodukte

Order Number	D	L	L1	L2	WAF	t
	mm	mm	mm	mm	mm	mm
EVRU 22x1 / M6	22	38	12	32	10	1
EVRU 22x1 / M8	22	42	12	32	13	1
EVRU 22x1,2 / M 8	22	42	10	30	13	1,2
EVRU 22x1,5 / M6	22	42	12	32	10	1,5
EVRU 22x1,5 / M8 kurz	22	30	12		13	1,5
EVRU 22x1,5 / M 8 SO*	22	42	10	30	13	1,5
EVRU 22x1,5 / M8	22	42	12	32	13	1,5
EVRU 25x1 / M 6	25	42	12	32	10	1
EVRU 25x1,5 / M6	25	42	12	32	10	1,5
EVRU 25x1,5 / M8	25	42	11	31	13	1,5
EVRU 25x1,5 / M8 OL	25	43	12	32	13	1,5
EVRU 25x1,8 / M8 OL	25	43	10	30	13	1,8
EVRU 25x2 / M8 OL	25	43	10	30	13	2
EVRU 28x1,5 / M6	28	41	12	32	10	1,5
EVRU 28x1,5 / M8	28	42	12	32	13	1,5
EVRU 28x2 / M8	28	42	12	32	13	2
EVRU 30x1 / M 6 SO kurz	30	25	12		10	1
EVRU 30x1 / M6 SO	30	43	12	32	10	1
EVRU 30x1 / M8	30	42	12	32	13	1,5
EVRU 30x1,5 / M8	30	42	12	32	13	1,5
EVRU 30x1,5 / M10	30	42	10	30	17	1,5
EVRU 30x2 / M6 SO	30	35	8	23	10	2
EVRU 30x2 / M8	30	42	12	32	13	2
EVRU 30x2 / M10	30	42	10	30	17	2
EVRU 32x1,2 / M 6 kurz	32	42	12	32	10	1,2
EVRU 32x1,2 / M6	32	42	12	32	10	1,2
EVRU 32x1,5 / M10	32	42	10	30	17	1,5
EVRU 32x2 / M6	32	43	12	32	10	2
EVRU 32x2 / M10	32	42	10	30	17	2
EVRU 32x2,5 / M10	32	42	10	30	17	2,5
EVRU 33,5x2 / M8	33,5	42	10	30	13	2
EVRU 34x2 / M10	34	43	10	30	17	2
EVRU 35x1,5 / M6	35	40	12	32	10	1,5
EVRU 35x1,5 / M10	35	39	10	29	17	1,5
EVRU 35x2 / M10	35	43	10	30	17	2
EVRU 35x2,5 / M6	35	42	12	32	10	2,5
EVRU 37,5x1,5 / M8	37	43	10	30	13	1,5
EVRU 37,5x1,5 / M10	37	42	10	30	17	1,5
EVRU 38x1,2 / M10	38	42	10	30	17	1,2
EVRU 40x1,5 / M8	40	42	12	32	13	1,5
EVRU 40x1,5 / M10	40	44	10	30	17	1,5
EVRU 40x2 / M10	40	42	10	30	17	2
EVRU 40x2,5 / M6	40	43	12	32	10	2,5
EVRU 42x1,5 / M10	42	41	10	30	17	1,5
EVRU 42x2 / M10	42	43	10	30	17	2
EVRU 45x2 / M10	45	42	10	30	17	2
EVRU 48x4 / M8	48	42	10	30	13	4



Walter Bethke GmbH & Co. KG

Technische Kunststoff - und Hybridprodukte

Order Number	D	L	L1	L2	WAF	t
	mm	mm	mm	mm	mm	mm
EVRU 50x1,5 / M10	50	42	10	30	17	1,5
EVRU 60x1,6 / M10	60	40	10	30	17	1,6
EVRU 60x2 / M8	60	41	12	32	13	2
EVRU 60,3x1,5 / M10	60,3	43,5	10	30	17	1,5
EVRU 80x2 / M10	80	37	10	28	17	2