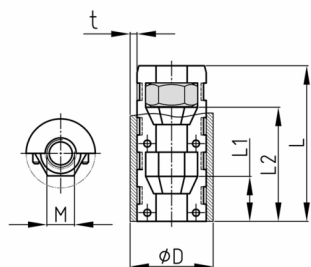


### Product Group EVRUMH

Assembled expander connectors without collar made of PA for round tubes with one hexagon nut (rear)

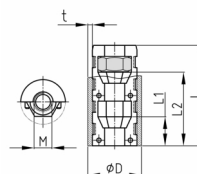


#### Standard Colours

- black

#### Material

- Base body: Polyamide (PA)
- Nut: zinc-plated steel



#### Product information

- These two-part expander connectors without collar have tapered conical cavities for hexagon nuts or screws. Tightening of the thread presses the connector against inner tube wall (rawle plug effect), providing a connection resistant to tension. The intensity of this resistance depends to a degree from the quality of the tubes (tolerances, roughness, welding seam, etc.) and as well the torque of the tightening. We advise to check the application beforehand.
- Stepped bores in the tube (outer bore larger than the diameter of the screw head, inner hole suitable for the respective thread) and use of slotted or hexagon socket screws allow high extraction forces without deformation of the tube wall.
- Order-related production for individual article sizes! Please ask for minimum quantity.
- OL = without ribs
- SO = dimensions deviate from series standard
- SO\* = without mounting for saddle spacer EVDRAD
- Right-angled connection to trusses
- Tube extensions (1 expander with nut and 1 expander with screw)
- Subsequent installation of shelf compartments in already existing constructions
- Frequently disassembled and reassembled racks
- Invisible connections
- Right-angled connection of round tubes with different diameters (only for thread M8 and in combination with group "EVDRAD" - on request)

Order Number	D	L	L1	L2	M	t
	mm	mm	mm	mm		mm
EVRUMH 16x0,75 / M6	16	43	12	32	M6	0,75
EVRUMH 16x1 / M6	16	42	12	32	M6	1
EVRUMH 19x1,5 / M6	19	39	12	32	M6	1,5
EVRUMH 20x1 / M6	20	42	12	32	M6	1
EVRUMH 20x1 / M8	20	42	12	32	M8	1
EVRUMH 20x1 / M8 SO*	20	42	10	30	M8	1
EVRUMH 20x1,5 / M6	20	42	12	32	M6	1,5
EVRUMH 20x1,5 / M8	20	42	12	32	M8	1,5
EVRUMH 20x1,5 / M8 SO*	20	42	10	30	M8	1,5
EVRUMH 20x2 / M8 SO*	20	42	10	30	M8	2
EVRUMH 22x1 / M5	22	42	14	33	M5	1
EVRUMH 22x1 / M6	22	38	12	32	M6	1



# Walter Bethke GmbH & Co. KG

Technische Kunststoff - und Hybridprodukte

Order Number	D	L	L1	L2	M	t
	mm	mm	mm	mm		mm
EVRUMH 22x1 / M8	22	42	12	32	M8	1
EVRUMH 22x1,2 / M8	22	42	10	30	M8	1,2
EVRUMH 22x1,2 / M8 DIN 985	22	42	10	30	M8	1,2
EVRUMH 22x1,5 / M6	22	42	12	32	M6	1,5
EVRUMH 22x1,5 / M8	22	30	11	32	M8	1,5
EVRUMH 22x1,5 / M8 DIN 985	22	42	12	32	M8	1,5
EVRUMH 22x1,5 / M8 SO*	22	42	10	30	M8	1,5
EVRUMH 22x1,5/M8 SO* DIN 985	22	42	10	30	M8	1,5
EVRUMH 25x1 / M6	25	42	12	32	M6	1
EVRUMH 25x1,5 / M6	25	42	12	32	M6	1,5
EVRUMH 25x1,5 / M8	25	42	11	31	M8	1,5
EVRUMH 25x1,5 / M8 OL	25	43	12	32	M8	1,5
EVRUMH 25x1,8 / M8 OL	25	43	10	30	M8	1,8
EVRUMH 25x2 / M8 OL	25	43	10	30	M8	2
EVRUMH 28x1,5 / M6	28	41	12	32	M6	1,5
EVRUMH 28x1,5 / M8	28	42	12	32	M8	1,5
EVRUMH 28x2 / M8	28	42	12	32	M8	1,5
EVRUMH 30x1 / M6 SO	30	43	12	32	M6	2
EVRUMH 30x1 / M8	30	42	12	32	M8	1
EVRUMH 30x1,5 / M8	30	42	12	32	M8	1,5
EVRUMH 30x1,5 / M10	30	42	10	30	M10	1,5
EVRUMH 30x2 / M6 SO	30	35	8	23	M6	2
EVRUMH 30x2 / M8	30	42	12	32	M8	2
EVRUMH 30x2 / M10	30	42	10	30	M10	2
EVRUMH 32x1,2 / M6	32	42	12	32	M6	1,2
EVRUMH 32x1,5 / M10	32	42	10	30	M10	1,5
EVRUMH 32x2 / M6	32	43	12	32	M6	2
EVRUMH 32x2 / M10	32	42	10	30	M10	2
EVRUMH 32x2,5 / M10	32	42	10	30	M10	2,5
EVRUMH 33,5x2 / M8	33,5	42	10	30	M8	2
EVRUMH 34x2 / M10	34	43	10	30	M10	2
EVRUMH 35x1,5 / M6	35	40	12	32	M6	1,5
EVRUMH 35x1,5 / M10	35	39	10	29	M10	1,5
EVRUMH 35x2 / M10	35	43	10	30	M10	2
EVRUMH 35x2,5 / M6	35	42	12	32	M6	2,5
EVRUMH 37,5x1,5 / M8	37,5	43	10	30	M8	1,5
EVRUMH 37,5x1,5 / M10	37,5	42	10	30	M10	1,5
EVRUMH 38x1,2 / M10	38	42	10	30	M10	1,2
EVRUMH 40x1,5 / M8	40	42	12	32	M8	1,5
EVRUMH 40x1,5 / M10	40	44	10	30	M10	1,5
EVRUMH 40x2 / M10	40	42	10	30	M10	2
EVRUMH 40x2,5 / M6	40	43	12	32	M6	2,5
EVRUMH 42x1,5 / M10	42	41	10	30	M10	1,5
EVRUMH 42x2 / M10	42	43	10	30	M10	2
EVRUMH 45x2 / M10	45	42	10	30	M10	2
EVRUMH 48x4 / M8	48	42	10	30	M8	4
EVRUMH 50x1,5 / M10	50	42	10	30	M10	1,5



# Walter Bethke GmbH & Co. KG

Technische Kunststoff - und Hybridprodukte

Order Number	D	L	L1	L2	M	t
	mm	mm	mm	mm		mm
EVRUMH 60x1,6 / M10	60	40	10	30	M10	1,6
EVRUMH 60x2 / M8	60	41	12	32	M8	2
EVRUMH 60,3x1,5 / M10	60,3	43,5	10	30	M10	1,5
EVRUMH 80x2 / M10	80	37	10	28	M10	2