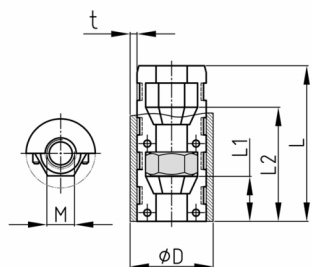


Product Group EVRUMV

Assembled expander connectors without collar made of PA for round tubes with one hexagon nut (in the front)

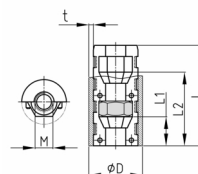


Standard Colours

- black

Material

- Base body: Polyamide (PA)
- Nut: zinc-plated steel



Product information

- These two-part expander connectors without collar have tapered conical cavities for hexagon nuts or screws. Tightening of the thread presses the connector against inner tube wall (rawle plug effect), providing a connection resistant to tension. The intensity of this resistance depends to a degree from the quality of the tubes (tolerances, roughness, welding seam, etc.) and as well the torque of the tightening. We advise to check the application beforehand.
- Stepped bores in the tube (outer bore larger than the diameter of the screw head, inner hole suitable for the respective thread) and use of slotted or hexagon socket screws allow high extraction forces without deformation of the tube wall.
- Order-related production for individual article sizes! Please ask for minimum quantity.
- OL = without ribs
- SO = dimensions deviate from series standard
- SO* = without mounting for saddle spacer EVDRAD
- Right-angled connection to trusses
- Tube extensions (1 expander with nut and 1 expander with screw)
- Subsequent installation of shelf compartments in already existing constructions
- Frequently disassembled and reassembled racks
- Invisible connections
- Right-angled connection of round tubes with different diameters (only for thread M8 and in combination with group "EVDRAD" - on request)

Order Number	D	L	L1	L2	M	t
	mm	mm	mm	mm		mm
EVRUMV 16x0,75 / M6	16	43	12	32	M6	0,75
EVRUMV 16x1 / M6	16	42	12	32	M6	1
EVRUMV 19x1,5 / M6	19	39	12	32	M6	1,5
EVRUMV 20x1 / M 6	20	42	12	32	M6	1
EVRUMV 20x1 / M8	20	42	12	32	M8	1
EVRUMV 20x1 / M 8 SO*	20	42	10	30	M8	1
EVRUMV 20x1,5 / M6	20	42	12	32	M6	1,5
EVRUMV 20x1,5 / M8	20	42	12	32	M8	1,5
EVRUMV 20x1,5 / M 8 SO*	20	42	10	30	M8	1,5
EVRUMV 20x1,5 / M 8 DIN 985	20	42	10	30	M8	1,5
EVRUMV 20x1,5/M 8 SO* DIN 985	20	42	10	30	M8	1,5
EVRUMV 20x2 / M 8 SO*	20	42	10	30	M8	2



Walter Bethke GmbH & Co. KG

Technische Kunststoff - und Hybridprodukte

Order Number	D	L	L1	L2	M	t
	mm	mm	mm	mm		mm
EVRUMV 20x2/M 8 SO* DIN 985	20	42	10	30	M8	2
EVRUMV 22x1 / M5	22	42	14	33	M5	1
EVRUMV 22x1 / M6	22	38	12	32	M6	1
EVRUMV 22x1 / M8	22	42	12	32	M8	1
EVRUMV 22x1,2 / M 8	22	42	10	30	M8	1,2
EVRUMV 22x1,2 / M 8 DIN 985	22	42	10	30	M8	1,2
EVRUMV 22x1,5 / M6	22	42	12	32	M6	1,5
EVRUMV 22x1,5 / M8 kurz	22	30	11		M8	1,5
EVRUMV 22x1,5 / M8	22	42	12	32	M8	1,5
EVRUMV 22x1,5 / M8 DIN 985	22	42	12	32	M8	1,5
EVRUMV 22x1,5 / M 8 SO*	22	42	10	30	M8	1,5
EVRUMV 22x1,5/M 8 SO* DIN 985	22	42	10	30	M8	1,5
EVRUMV 25x1 / M 6	25	42	12	32	M6	1
EVRUMV 25x1,5 / M6	25	42	12	32	M6	1,5
EVRUMV 25x1,5 / M8	25	42	11	31	M8	1,5
EVRUMV 25x1,5 / M 8 DIN 985	25	42	10	30	M8	1,5
EVRUMV 25x1,5 / M8 OL	25	43	12	32	M8	1,5
EVRUMV 25x1,8 / M8 OL	25	42	10	30	M8	1,8
EVRUMV 25x2 / M8 OL	25	42	10	30	M8	2
EVRUMV 28x1,5 / M6	28	41	12	32	M6	1,5
EVRUMV 28x1,5 / M8	28	42	12	32	M8	1,5
EVRUMV 28x2 / M8	28	42	12	32	M8	2
EVRUMV 30x1 / M6 SO	30	43	12	32	M6	1
EVRUMV 30x1 / M 6 SO kurz	30	25	12		M6	1
EVRUMV 30x1 / M8	30	42	12	30	M8	1
EVRUMV 30x1,5 / M8	30	42	12	23	M8	1,5
EVRUMV 30x1,5 / M10	30	42	10	30	M10	1,5
EVRUMV 30x2 / M6 SO	30	35	8	23	M6	2
EVRUMV 30x2 / M8	30	42	12	32	M8	2
EVRUMV 30x2 / M10	30	42	10	30	M10	2
EVRUMV 32x1,2 / M6	32	42	12	32	M6	1,2
EVRUMV 32x1,2 / M 6 kurz	32	25	12		M6	1,2
EVRUMV 32x1,5 / M10	32	42	10	30	M10	1,5
EVRUMV 32x2 / M6	32	43	12	32	M6	2
EVRUMV 32x2 / M10	32	42	10	30	M10	2
EVRUMV 32x2,5 / M10	32	42	10	30	M10	2,5
EVRUMV 33,5x2 / M8	33,5	42	10	30	M8	2
EVRUMV 34x2 / M10	34	43	10	30	M10	2
EVRUMV 35x1,5 / M6	35	40	12	32	M6	1,5
EVRUMV 35x1,5 / M10	35	39	10	29	M10	1,5
EVRUMV 35x2 / M10	35	43	10	30	M10	2
EVRUMV 35x2,5 / M6	35	42	12	32	M6	2,5
EVRUMV 37,5x1,5 / M8	37	42	10	30	M8	1,5
EVRUMV 37,5x1,5 / M10	37	42	10	30	M10	1,5
EVRUMV 38x1,2 / M10	38	42	10	30	M10	1,2
EVRUMV 40x1,5 / M8	40	42	12	32	M8	1,5
EVRUMV 40x1,5 / M 10	40	44	10	30	M10	1,5



Walter Bethke GmbH & Co. KG

Technische Kunststoff - und Hybridprodukte

Order Number	D	L	L1	L2	M	t
	mm	mm	mm	mm		mm
EVRUMV 40x2 / M10	40	42	10	30	M10	2
EVRUMV 40x2,5 / M6	40	43	12	32	M6	2,5
EVRUMV 42x1,5 / M10	42	41	10	30	M10	1,5
EVRUMV 42x2 / M10	42	43	10	30	M10	2
EVRUMV 45x2 / M10	45	42	10	30	M10	2
EVRUMV 48x4 / M8	48	42	10	30	M8	4
EVRUMV 50x1,5 / M10	50	42	10	30	M10	1,5
EVRUMV 60x1,6 / M10	60	40	10	30	M10	1,6
EVRUMV 60x2 / M8	60	41	12	32	M8	2
EVRUMV 60,3x1,5 / M10	60,3	43,5	10	30	M10	1,5
EVRUMV 80x2 / M10	80	37	10	28	M10	2